

Maternal and Child Health Data in Western New York

Profiling High Risk Communities

Prepared for the Health Foundation for Western and Central New York

Margaret K. Formica, MSPH, PhD

Department of Public Health & Preventive Medicine

SUNY Upstate Medical University

December 2015

Table of Contents

| | |
|---|----|
| List of Tables | 2 |
| Introduction | 3 |
| Methodology..... | 4 |
| Demographic Profiles of Western New York Zip Codes..... | 4 |
| Maternal and Child Health Outcomes by Zip Code..... | 5 |
| Teen Pregnancy Rates..... | 5 |
| Teen Birth Rates..... | 6 |
| Timing of Prenatal Care | 7 |
| Low Birth Weight | 8 |
| Preterm Birth | 9 |
| Infant Death Rate..... | 12 |
| Concentration of Risk by Zip Code | 14 |
| Hot Spot Analysis | 16 |
| References | 20 |
| Appendix A..... | 21 |
| Appendix B | 26 |
| Appendix C | 33 |

List of Tables

| | |
|---|----|
| Table 1. Western New York County Populations | 4 |
| Table 2. Average Demographic Characteristics by Zip Codes in the Service Area..... | 5 |
| Table 3. Zip Codes with High Teen Pregnancy Rates by County | 6 |
| Table 4. Zip Codes with High Teen Birth Rates by County | 7 |
| Table 5. Zip Codes with High Percent of Late or No Prenatal Care by County | 8 |
| Table 6. Zip Codes with High Percentage of Low Birth Weight by County | 9 |
| Table 7. Zip Codes with High Percent of Preterm Birth by County | 11 |
| Table 8. Zip Codes with High Infant Death Rate by County | 13 |
| Table 9. Summary of Key Outcomes in High Risk Zip Codes* | 14 |
| Table 10. Common Combinations of Poor Outcomes in High Risk Zip Codes | 16 |
| Table 11. Demographic Characteristics of High Risk and Low/Moderate Risk Zip Codes | 16 |
| Table 12. Hot Spots of Poor Maternal and Child Health Outcomes in WNY (2011-2013)..... | 17 |
| Table 13. Non-congruent Zip Codes of Poor Maternal and Child Health Outcomes in WNY (2011-2013) | 19 |

Introduction

In January 2015, the Health Foundation for Western and Central New York (HFWCNY) created a fund to provide support for small scale projects and promising ideas that address specific maternal and child health needs in the high risk communities it serves. High risk communities or “hot spots” in Western New York (WNY) were initially identified in an analysis using data from 2007-2009 births in the region. To obtain a current picture of the high risk communities in the region, the HFWCNY commissioned Dr. Margaret Formica from the Department of Public Health and Preventive Medicine at SUNY Upstate Medical University to update the “hot spot” analysis using the most recently available data from the New York State Department of Health (NYS DOH), births from 2011-2013.

The current analysis includes an assessment of the demographic profiles and maternal and child health outcomes for the 181 zip codes of the eight counties within the WNY target area. Zip code level data from the U.S. Census Bureau (Appendix A) were used to examine demographic characteristics, including:

- Total population
- Percent of population under age five
- Percent of population eighteen and older
- Percent of population sixty-five and older
- Percent of population non-English speaking
- Average family size
- Percent of families below poverty
- Racial and ethnic composition
- Educational levels
- Employment levels

Additionally, zip code level data from the NYS DOH (Appendix B) were used to evaluate maternal and child health outcomes, including:

- Total births
- Teen pregnancy rate
- Teen birth rate
- Prenatal care status
- Low birth weight
- Preterm birth
- Infant death rate

The following report includes tables and maps (Appendix C) detailing the demographic profiles of the zip codes in the target area; highlights those zip codes with poor performance on the six key maternal and child health outcomes; identifies the individual zip codes with the highest concentration of risk; and identifies the congruent high risk zip codes (“hot spots”) where the HFWCNY can focus its funding and efforts.

Methodology

Zip code level data on demographic characteristics were obtained from the *American FactFinder* on the U.S. Census Bureau's website, and utilized data from the 2010 Census and the 2009-2013 American Community Survey 5-Year estimates¹. The NYS DOH provided zip code level data to the HFWCNY on maternal and child health outcomes from 2011-2013². SAS[®] version 8 was used to merge the datasets and conduct all of the analyses.

To identify zip codes with the highest concentration of risk, a risk score was calculated based on performance on five of the six maternal and child health outcomes (teen pregnancy, prenatal care, low birth weight, preterm birth, and infant death rate). For each outcome, one point was given for ranking within the highest quartile of the WNY region. The resulting risk score ranges from 0 to 5 and was categorized as low risk (risk score=0), moderate risk (risk score=1), and high risk (risk score ≥ 2).

Demographic Profiles of Western New York Zip Codes

Western New York is comprised of eight counties that vary in population from 41,798 in Wyoming County to 911,915 in Erie County. Table 1 displays the population size of each county in the target area.

Table 1. Western New York County Populations

| County | Total Population |
|-------------|------------------|
| Allegany | 49,713 |
| Cattaraugus | 81,070 |
| Chautauqua | 128,121 |
| Erie | 911,915 |
| Genesee | 60,511 |
| Niagara | 214,344 |
| Orleans | 41,844 |
| Wyoming | 41,798 |

Table 2 provides an overview of the demographic characteristics of the target area at the zip code level. For several of the variables, the standard deviation is high indicating substantial variability across the zip codes. For example, the mean percent of population that reports having a Bachelor's degree or higher is 22.0; however, the percents range from 6.4 to 88.1 across the zip codes. This variability indicates the importance of considering the demographic profile of the specific community for which programs and services will be targeted.

Table 2. Average Demographic Characteristics by Zip Codes in the Service Area

| Variable | N | Mean | Standard Deviation | Minimum | Maximum |
|---------------------------------------|-----|---------|--------------------|---------|---------|
| Total Population | 181 | 8449.26 | 10800.48 | 230.0 | 53555.0 |
| Population < 5 Years (%) | 181 | 5.47 | 1.38 | 0.5 | 13.5 |
| Population ≥ 18 Years (%) | 181 | 77.51 | 3.93 | 56.8 | 97.4 |
| Population ≥ 65 Years (%) | 181 | 15.25 | 3.08 | 2.9 | 26.8 |
| White (%) | 181 | 89.94 | 16.21 | 14.5 | 99.6 |
| Black (%) | 181 | 5.44 | 13.95 | 0.0 | 80.5 |
| Asian (%) | 181 | 0.91 | 1.64 | 0.0 | 11.0 |
| American Indian or Alaskan Native (%) | 181 | 1.35 | 4.59 | 0.0 | 35.7 |
| Other (%) | 181 | 0.89 | 1.90 | 0.0 | 16.7 |
| Hispanic (%) | 181 | 2.89 | 4.35 | 0.0 | 37.2 |
| Average Family Size | 181 | 2.99 | 0.16 | 2.56 | 4.37 |
| High School Graduate or Higher (%) | 181 | 88.16 | 6.14 | 59.1 | 99.0 |
| Bachelor's Degree or Higher (%) | 181 | 22.03 | 12.19 | 6.4 | 88.1 |
| Speaks a Foreign Language at Home (%) | 181 | 6.44 | 6.49 | 0.0 | 43.7 |
| Participating in the labor force (%) | 181 | 61.72 | 7.09 | 32.3 | 78.8 |
| Families Below poverty level (%) | 181 | 13.85 | 9.11 | 0.1 | 45.6 |

Maternal and Child Health Outcomes by Zip Code

Maternal and child health outcomes were analyzed across 181 zip codes in WNY and compared to national averages. For each outcome, the zip codes were ranked and divided into quartiles. For zip codes with relatively few total births and generally lower total population, each birth will have a greater impact on the outcome. For 11 zip codes, teen pregnancy rates and births were suppressed because there were fewer than 30 female residents ages 15-19.

The following section presents the results of the six key maternal and child health outcomes.

Teen Pregnancy Rates

Teen pregnancy rates are calculated by the number of pregnancies per 1000 females age 15 to 19 years and the data for the WNY region are presented in Table 3. The highest quartile for WNY's teen pregnancy rate (≥ 38.1 pregnancies per 1000 females age 15-19) is substantially lower than the national average (57.4 pregnancies per 1000 females age 15-19). Only twenty zip codes in WNY were above the national average, indicating that WNY is performing well in comparison with the nation. The zip code with the highest teen pregnancy rate for the region was 14211 in the city of Buffalo in Erie County with 127.6 pregnancies per 1000 females age 15-19. Erie County also has 19 zip codes in the highest quartile

of teen pregnancy rates for the region. Four counties (Allegany, Cattaraugus, Chautauqua, and Niagara) have several zip codes in the highest quartile for the region, as well as at least one zip code above the national average. Two counties have no zip codes with teen pregnancy rates above the national average, but have at least one zip code in the highest quartile for the region. Wyoming County has no zip codes above the national average or in the highest quartile of the region.

Table 3. Zip Codes with High Teen Pregnancy Rates by County

| County | Total Number of Zip Codes | Number of Zip Codes above National Average (>57.4) ³ | Zip Codes above National Average | Number of Zip Codes in the Highest Quartile of WNY (≥ 38.1) |
|-------------|---------------------------|---|---|--|
| Allegany | 18 | 1 | 14897 | 5 |
| Cattaraugus | 21 | 2 | 14129, 14779 | 9 |
| Chautauqua | 24 | 1 | 14048 | 5 |
| Erie | 58 | 13 | 14091, 14201, 14203, 14204, 14206, 14207, 14208, 14209, 14211, 14212, 14213, 14215, 14218 | 19 |
| Genesee | 13 | 0 | | 1 |
| Niagara | 17 | 3 | 14301, 14303, 14305 | 3 |
| Orleans | 7 | 0 | | 1 |
| Wyoming | 12 | 0 | | 0 |
| Total | 170* | 20 | | 43 |

*11 Zip Codes were missing teen pregnancy rate data.

Teen Birth Rates

Teen birth rate is defined as number of births per 1000 females age 15-19 years. As indicated in Table 4, the highest quartile for WNY's teen birth rate (≥ 26.5 births per 1000 females age 15-19) is equal to the national average (26.5 births per 1000 females age 15-19). Forty-two zip codes in the region are above the national average and all counties have a zip code above the national average. The zip code with the highest teen birth rate is 14211 in the city of Buffalo in Erie County at 73.3 births per 1000 females age 15-19. Erie County again has the highest number of zip codes in the top quartile for the region, although Allegany, Cattaraugus, and Chautauqua Counties each contributed several zip codes, as well. All counties contributed at least one zip code in the highest quartile for the region.

Table 4. Zip Codes with High Teen Birth Rates by County

| County | Total Number of Zip Codes | Number of Zip Codes above National Average (>26.5) ⁴ | Zip Codes above National Average | Number of Zip Codes in the Highest Quartile of WNY (≥ 26.5) |
|-------------|---------------------------|---|---|--|
| Allegany | 18 | 5 | 14711, 14739, 14754, 14895, 14897 | 5 |
| Cattaraugus | 21 | 9 | 14070, 14129, 14171, 14729, 14741, 14743, 14755, 14760, 14779 | 9 |
| Chautauqua | 24 | 6 | 14048, 14701, 14716, 14733, 14775, 14781 | 6 |
| Erie | 58 | 15 | 14034, 14091, 14201, 14202, 14204, 14206, 14207, 14208, 14209, 14210, 14211, 14212, 14213, 14215, 14218 | 15 |
| Genesee | 13 | 1 | 14020 | 2 |
| Niagara | 17 | 3 | 14301, 14303, 14305 | 3 |
| Orleans | 7 | 2 | 14098, 14411 | 2 |
| Wyoming | 12 | 1 | 14550 | 1 |
| Total | 170* | 42 | | 43 |

*11 Zip Codes were missing teen birth rate data.

Timing of Prenatal Care

The service area is performing exceptionally well with respect to timing of entry into prenatal care (Table 5). Timing of prenatal care is assessed by the percent of women entering prenatal care late (in the 3rd trimester) or not at all. The cutoff for the highest quartile for the region is 6.2 percent, which is far below the national average of 26.3 percent of pregnant women entering prenatal care late or not at all. There are only 2 zip codes above the national average, 14709 (Angelica in Allegany County) and 14726 (Conewango Valley in Cattaraugus County). The poorest performing zip code in the region with respect to timing of prenatal care is 14726, with 30.3 percent of women entering into prenatal care late or not at all. Four counties have the majority of zip codes in the highest quartile of late or no prenatal care for the region: Chautauqua County with 11 zip codes, Allegany and Erie Counties with 9 zip codes each, and Cattaraugus County with 8 zip codes. All counties contributed at least one zip code in the highest quartile for the region.

Table 5. Zip Codes with High Percent of Late or No Prenatal Care by County

| County | Total Number of Zip Codes | Number of Zip Codes above National Average (>26.3)⁵ | Zip Codes above National Average | Number of Zip Codes in the Highest Quartile of WNY (≥ 6.2) |
|---------------|----------------------------------|--|---|---|
| Allegany | 22 | 1 | 14709 | 9 |
| Cattaraugus | 22 | 1 | 14726 | 8 |
| Chautauqua | 25 | 0 | | 11 |
| Erie | 60 | 0 | | 9 |
| Genesee | 13 | 0 | | 1 |
| Niagara | 17 | 0 | | 4 |
| Orleans | 7 | 0 | | 2 |
| Wyoming | 15 | 0 | | 2 |
| Total | 181 | 2 | | 46 |

Low Birth Weight

Low birth weight is assessed by the percent of births weighing between 100-2499 grams and the data for the region are presented in Table 6. Zip codes in the highest quartile of percent of babies born low birth weight for the region ($\geq 9.3\%$) are all above the national average of 8.0%, indicating that the WNY region is performing poorly compared to the nation. The region has 64 zip codes with percent of low birth weight births greater than the national average. Erie County contributed 22 of those zip codes, while Allegany, Cattaraugus, Chautauqua, and Niagara Counties contributed 8-9 zip codes each. The zip code with the highest percent of low birth weight births is in Ceres, Allegany County (14721) with 30.0% of babies born low birth weight. Erie County also contributed the most zip codes in the highest quartile for the region (N=18), while Niagara County contributed the second highest number of zip codes, with seven.

Table 6. Zip Codes with High Percentage of Low Birth Weight by County

| County | Total Number of Zip Codes | Number of Zip Codes above National Average (>8.0) ⁴ | Zip Codes above National Average | Number of Zip Codes in the Highest Quartile of WNY (≥ 9.3) |
|-------------|---------------------------|--|--|---|
| Allegany | 22 | 9 | 14060, 14715, 14721, 14727, 14739, 14754, 14806, 14895, 14897 | 5 |
| Cattaraugus | 22 | 8 | 14101, 14171, 14706, 14729, 14738, 14753, 14772, 14779 | 6 |
| Chautauqua | 25 | 8 | 14048, 14063, 14136, 14724, 14728, 14769, 14782, 14784 | 6 |
| Erie | 60 | 22 | 14004, 14006, 14030, 14068, 14102, 14141, 14201, 14203, 14204, 14206, 14207, 14208, 14209, 14210, 14211, 14212, 14213, 14214, 14215, 14216, 14218, 14225 | 18 |
| Genesee | 13 | 2 | 14040, 14125 | 1 |
| Niagara | 17 | 8 | 14012, 14028, 14120, 14131, 14301, 14303, 14304, 14305 | 7 |
| Orleans | 7 | 3 | 14476, 14477, 14571 | 1 |
| Wyoming | 15 | 4 | 14082, 14530, 14550, 14569 | 3 |
| Total | 181 | 64 | | 47 |

Preterm Birth

Percent of preterm births is defined as the percentage of births that occurred prior to 37 weeks gestation. The cutoff for the highest quartile of percent of preterm birth for WNY (13.4%) is higher than the national average of 11.4%, indicating poor performance in the region for this outcome (Table 7).

Seventy-nine zip codes in the region have percent of preterm birth higher than the national average. Erie, Chautauqua, Niagara, Allegany, and Cattaraugus Counties have the highest number of zip codes with percents above the national average at 24, 13, 12, 11 and 10, respectively. The zip code with the highest percent of preterm birth for the region is in Farmersville Station, Allegany County (14060) at 26.7 percent. Erie County fared the worst with respect to preterm births with 16 zip codes in the highest quartile for the region.

Table 7. Zip Codes with High Percent of Preterm Birth by County

| County | Total Number of Zip Codes | Number of Zip Codes above National Average (> 11.4) ⁴ | Zip Codes above National Average | Number of Zip Codes in the Highest Quartile of WNY (≥ 13.4) |
|--------------|---------------------------|--|--|--|
| Allegany | 22 | 11 | 14060, 14709, 14711, 14715, 14721, 14727, 14739, 14754, 14813, 14822, 14897 | 5 |
| Cattaraugus | 22 | 10 | 14101, 14706, 14719, 14726, 14738, 14743, 14748, 14755, 14760, 14772 | 7 |
| Chautauqua | 25 | 13 | 14048, 14062, 14063, 14136, 14701, 14728, 14747, 14750, 14767, 14769, 14782, 14784, 14787 | 7 |
| Erie | 60 | 24 | 14006, 14034, 14043, 14072, 14081, 14091, 14102, 14111, 14201, 14203, 14204, 14206, 14207, 14208, 14210, 14211, 14212, 14213, 14214, 14215, 14216, 14218, 14225, 14227 | 16 |
| Genesee | 13 | 4 | 14013, 14040, 14125, 14416 | 3 |
| Niagara | 17 | 12 | 14012, 14094, 14105, 14120, 14131, 14132, 14172, 14174, 14301, 14303, 14304, 14305 | 6 |
| Orleans | 7 | 2 | 14098, 14571 | 1 |
| Wyoming | 15 | 3 | 14009, 14550, 14569 | 1 |
| Total | 181 | 79 | | 46 |

Infant Death Rate

The infant death rate is defined as the number of deaths under the age of 12 months per 1000 live births. The data for the region are displayed in Table 8. Zip codes in the highest quartile of infant death rate for the region (≥ 8.6 per 1000 live births) are all above the national average of 6.0 per 1000 live births, indicating that the region is performing poorly compared to the nation with respect to infant deaths. The region has 64 zip codes with an infant death rate higher than the national average. Erie County has by far the highest number of zip codes above the national average (N=26), with Cattaraugus County following with eight. Ninety-five zip codes have no infant deaths during the three-year time period. However, zip code 14754 (Little Genesee, Allegany County) has an infant death rate of 58.8 per 1000 live births, the highest in the region. Erie County has the highest number of zip codes in the top quartile of the region (N=17), followed by Cattaraugus County (N=6), and Allegany, Chautauqua, and Wyoming Counties, each with five.

Table 8. Zip Codes with High Infant Death Rate by County

| County | Total Number of Zip Codes | Number of Zip Codes above National Average (> 6.0)⁶ | Zip Codes above National Average | Number of Zip Codes in the Highest Quartile of WNY (≥ 8.6) |
|---------------|----------------------------------|--|--|---|
| Allegany | 22 | 7 | 14711, 14715, 14727, 14735, 14739, 14754, 14895 | 5 |
| Cattaraugus | 22 | 8 | 14101, 14706, 14737, 14738, 14743, 14755, 14760, 14779 | 6 |
| Chautauqua | 25 | 6 | 14048, 14136, 14701, 14733, 14767, 14787 | 5 |
| Erie | 60 | 26 | 14004, 14025, 14043, 14047, 14052, 14068, 14080, 14081, 14085, 14150, 14201, 14204, 14206, 14207, 14210, 14211, 14212, 14213, 14215, 14218, 14220, 14222, 14224, 14225, 14227, 14228 | 17 |
| Genesee | 13 | 4 | 14013, 14020, 14058, 14125 | 3 |
| Niagara | 17 | 6 | 14108, 14132, 14174, 14301, 14303, 14305 | 3 |
| Orleans | 7 | 2 | 14470, 14476 | 2 |
| Wyoming | 15 | 5 | 14066, 14082, 14113, 14167, 14569 | 5 |
| Total | 181 | 64 | | 46 |

Concentration of Risk by Zip Code

Table 9 displays each of the zip codes in the WNY region that is classified as high risk (risk score ≥ 2). A high risk zip code is defined as ranking in the highest quartile of the region for at least 2 of 5 maternal and child health outcomes (teen pregnancy rate, prenatal care, low birth weight, preterm birth, and infant death rate). Table 9 also indicates in which of the five outcomes the zip codes performed poorly. The region has 66 zip codes classified as high risk. All of the counties have at least one high risk zip code and Erie County has the most with twenty-one.

Table 9. Summary of Key Outcomes in High Risk Zip Codes*

| County | Zip Code | Teen Pregnancy Rate | Late/No Prenatal Care | Low Birth Weight | Preterm Birth | Infant Mortality Rate |
|-------------|----------|---------------------|-----------------------|------------------|---------------|-----------------------|
| Allegany | 14060 | | ✓ | ✓ | ✓ | |
| Allegany | 14709 | | ✓ | | ✓ | |
| Allegany | 14711 | ✓ | ✓ | | | ✓ |
| Allegany | 14721 | | ✓ | ✓ | ✓ | |
| Allegany | 14739 | ✓ | ✓ | | | ✓ |
| Allegany | 14754 | | | ✓ | ✓ | ✓ |
| Allegany | 14895 | ✓ | | | | ✓ |
| Allegany | 14897 | ✓ | ✓ | ✓ | ✓ | |
| Cattaraugus | 14101 | | | ✓ | ✓ | ✓ |
| Cattaraugus | 14138 | ✓ | ✓ | | | |
| Cattaraugus | 14171 | ✓ | | ✓ | | |
| Cattaraugus | 14719 | | ✓ | | ✓ | |
| Cattaraugus | 14726 | | ✓ | | ✓ | |
| Cattaraugus | 14729 | ✓ | ✓ | ✓ | | |
| Cattaraugus | 14738 | | | ✓ | ✓ | ✓ |
| Cattaraugus | 14741 | ✓ | ✓ | | | |
| Cattaraugus | 14743 | | | | ✓ | ✓ |
| Cattaraugus | 14755 | ✓ | | | | ✓ |
| Cattaraugus | 14760 | ✓ | | | | ✓ |
| Cattaraugus | 14772 | | | ✓ | ✓ | |
| Cattaraugus | 14779 | ✓ | ✓ | | | ✓ |
| Chautauqua | 14048 | ✓ | ✓ | ✓ | ✓ | ✓ |
| Chautauqua | 14062 | | ✓ | | ✓ | |
| Chautauqua | 14063 | | | ✓ | ✓ | |
| Chautauqua | 14701 | ✓ | | | | ✓ |
| Chautauqua | 14728 | | | ✓ | ✓ | |
| Chautauqua | 14747 | | ✓ | | ✓ | |
| Chautauqua | 14767 | | ✓ | | | ✓ |
| Chautauqua | 14769 | | | ✓ | ✓ | |
| Chautauqua | 14781 | ✓ | ✓ | | | |
| Chautauqua | 14782 | | | ✓ | ✓ | |

| County | Zip Code | Teen Pregnancy Rate | Late/No Prenatal Care | Low Birth Weight | Preterm Birth | Infant Mortality Rate |
|---------|----------|---------------------|-----------------------|------------------|---------------|-----------------------|
| Erie | 14004 | | | ✓ | | ✓ |
| Erie | 14034 | ✓ | | | ✓ | |
| Erie | 14081 | | ✓ | | ✓ | ✓ |
| Erie | 14091 | ✓ | | | ✓ | |
| Erie | 14102 | | | ✓ | ✓ | |
| Erie | 14201 | ✓ | | ✓ | ✓ | ✓ |
| Erie | 14203 | ✓ | | ✓ | ✓ | |
| Erie | 14204 | ✓ | ✓ | ✓ | ✓ | ✓ |
| Erie | 14206 | ✓ | ✓ | ✓ | ✓ | |
| Erie | 14207 | ✓ | | | | ✓ |
| Erie | 14208 | ✓ | | ✓ | ✓ | |
| Erie | 14209 | ✓ | | ✓ | | |
| Erie | 14210 | ✓ | | ✓ | ✓ | ✓ |
| Erie | 14211 | ✓ | ✓ | ✓ | ✓ | ✓ |
| Erie | 14212 | ✓ | ✓ | ✓ | ✓ | |
| Erie | 14213 | ✓ | ✓ | ✓ | ✓ | ✓ |
| Erie | 14214 | ✓ | | ✓ | ✓ | |
| Erie | 14215 | ✓ | ✓ | ✓ | ✓ | ✓ |
| Erie | 14218 | ✓ | ✓ | ✓ | | |
| Erie | 14220 | ✓ | | | | ✓ |
| Erie | 14225 | ✓ | | | | ✓ |
| Genesee | 14013 | | ✓ | | | ✓ |
| Genesee | 14125 | | | ✓ | ✓ | ✓ |
| Niagara | 14012 | | ✓ | ✓ | | |
| Niagara | 14131 | | | ✓ | ✓ | |
| Niagara | 14301 | ✓ | ✓ | ✓ | ✓ | |
| Niagara | 14303 | ✓ | ✓ | ✓ | ✓ | |
| Niagara | 14304 | | | ✓ | ✓ | |
| Niagara | 14305 | ✓ | ✓ | ✓ | ✓ | ✓ |
| Orleans | 14098 | ✓ | ✓ | | | |
| Orleans | 14571 | | ✓ | ✓ | ✓ | |
| Wyoming | 14066 | | ✓ | | | ✓ |
| Wyoming | 14082 | | | ✓ | | ✓ |
| Wyoming | 14550 | | | ✓ | ✓ | |
| Wyoming | 14569 | | | ✓ | | ✓ |
| | | 36 | 33 | 40 | 41 | 30 |

*Check marks indicate the zip code is in the highest quartile for that outcome

Common combinations of poor outcomes at the zip code level were also evaluated; Table 10 displays the top six combinations identified. Low birth weight and preterm birth are the most frequent combination with 32 zip codes sharing the two outcomes. The five other combinations listed were similar in the frequency of zip codes sharing the outcomes and much lower than the first combination.

Additionally, logistic regression analyses controlling for poverty were conducted to determine the outcomes that were most predictive of high risk. Preterm birth and low birth weight were the outcomes found to be most predictive of a high risk score.

Table 10. Common Combinations of Poor Outcomes in High Risk Zip Codes

| Outcome Combination | Number of Zip Codes with the Outcome Combination |
|---|--|
| Low Birth Weight and Preterm Birth | 32 |
| Preterm Birth and Late/No Prenatal Care | 20 |
| Teen Pregnancy Rate and Low Birth Weight | 20 |
| Teen Pregnancy Rate and Late/No Prenatal Care | 20 |
| Teen Pregnancy Rate and Infant Mortality Rate | 18 |
| Teen Pregnancy Rate and Preterm Birth | 18 |

Demographic characteristics were compared between zip codes classified as high risk and zip codes classified as low or moderate risk (Table 11). High risk zip codes are more racially diverse, less educated, less likely to participate in the labor force, and have a higher percentage of families living in poverty than the other zip codes.

Table 11. Demographic Characteristics of High Risk and Low/Moderate Risk Zip Codes

| Variable | High Risk Zip Codes (N=66) | Low/Moderate Risk Zip Codes (N=115) |
|---------------------------------|----------------------------|-------------------------------------|
| Percent White* | 82.3 | 94.3 |
| Percent High School Education* | 84.7 | 90.2 |
| Percent in Labor Force* | 59.5 | 63.0 |
| Percent of Families in Poverty* | 19.1 | 10.8 |

*p<0.05

Hot Spot Analysis

The 66 zip codes identified as high risk were included in the hot spot analysis. Hot spots were defined as at least 2 contiguous zip codes with the following characteristics:

1. Percent of families in poverty greater than or equal to 13.8 (mean for the WNY region) **AND**
2. High risk score

Seven hot spots (comprising 40 zip codes) of increased risk for poor maternal and child health outcomes were identified:

Table 12. Hot Spots of Poor Maternal and Child Health Outcomes in WNY (2011-2013)

| Hot Spot | Zip Code | Risk Score | Infant Death Rate | Low Birth Weight | Preterm Birth | Late or No Prenatal Care | Teen Pregnancy Rate | Percent Poverty | Total Births |
|--|----------|------------|-------------------|------------------|---------------|--------------------------|---------------------|-----------------|--------------|
| Allegany County | | | | | | | | | |
| 1. Belfast, Friendship, Wellsville and Whitesville | 14711 | 3 | X | | | X | X | 17.8 | 510 |
| | 14739 | 3 | X | | | X | X | 24.9 | |
| | 14895 | 2 | X | | | | X | 18.9 | |
| | 14897 | 4 | | X | X | X | X | 17.1 | |
| Chautauqua County | | | | | | | | | |
| 2. Jamesville, Dewittville, and Sinclairville | 14701 | 2 | X | | | | X | 23.9 | 1,656 |
| | 14728 | 2 | | X | X | | | 18.4 | |
| | 14782 | 2 | | X | X | | | 16.3 | |
| 3. Panama and Sherman | 14767 | 2 | X | | | X | | 22.7 | 175 |
| | 14781 | 2 | | | | X | X | 15.9 | |
| Erie County | | | | | | | | | |
| 4. Buffalo (West Side) | 14201 | 4 | X | X | X | | X | 45.2 | 3,323 |
| | 14207 | 2 | X | | | | X | 34.8 | |
| | 14213 | 5 | X | X | X | X | X | 45.6 | |
| 5. Buffalo (East Side) | 14203 | 3 | | X | X | | X | 44.5 | 8,419 |
| | 14204 | 5 | X | X | X | X | X | 35.5 | |
| | 14206 | 4 | | X | X | X | X | 22.0 | |
| | 14208 | 3 | | X | X | | X | 37.7 | |
| | 14209 | 2 | | X | | | X | 21.0 | |
| | 14210 | 4 | X | X | X | | X | 25.2 | |
| | 14211 | 5 | X | X | X | X | X | 43.5 | |
| | 14212 | 4 | | X | X | X | X | 36.9 | |
| | 14214 | 3 | | X | X | | X | 25.7 | |
| | 14215 | 5 | X | X | X | X | X | 30.2 | |
| | 14218 | 3 | | X | | X | X | 22.2 | |
| 14220 | 2 | X | | | | X | 14.4 | | |

| Hot Spot | Zip Code | Risk Score | Infant Death Rate | Low Birth Weight | Preterm Birth | Late or No Prenatal Care | Teen Pregnancy Rate | Percent Poverty | Total Births |
|---|----------|------------|-------------------|------------------|---------------|--------------------------|---------------------|-----------------|--------------|
| Niagara County | | | | | | | | | |
| 6. Niagara Falls | 14301 | 4 | | X | X | X | X | 35.0 | 1,512 |
| | 14303 | 4 | | X | X | X | X | 28.0 | |
| | 14305 | 5 | X | X | X | X | X | 26.3 | |
| Multi-County (Cattaraugus, Chautauqua, and Erie) | | | | | | | | | |
| 7. South Dayton, Cattaraugus, Conewango Valley, Great Valley, Hinsdale, Little Valley, Olean, Randolph, Salamanca, Dunkirk, Forestville, Fredonia, Irving | 14138 | 2 | | | | X | X | 16.1 | 2,747 |
| | 14719 | 2 | | | X | X | | 19.8 | |
| | 14726 | 2 | | | X | X | | 29.1 | |
| | 14741 | 2 | | | | X | X | 13.8 | |
| | 14743 | 2 | X | | X | | | 22.2 | |
| | 14755 | 2 | X | | | | X | 15.1 | |
| | 14760 | 2 | X | | | | X | 20.0 | |
| | 14772 | 2 | | X | X | | | 19.6 | |
| | 14779 | 3 | X | | | X | X | 24.9 | |
| | 14048 | 5 | X | X | X | X | X | 24.5 | |
| | 14062 | 2 | | | X | X | | 14.5 | |
| | 14063 | 2 | | X | X | | | 20.0 | |
| 14081 | 3 | X | | X | X | | 16.1 | | |

Additionally, there are three high risk zip codes that exceed the mean poverty level for the region, but are not adjacent to another high risk, high poverty zip code:

Table 13. Non-congruent Zip Codes of Poor Maternal and Child Health Outcomes in WNY (2011-2013)

| County | Zip Code | Risk Score | Infant Death Rate | Low Birth Weight | Preterm Birth | Late or No Prenatal Care | Teen Pregnancy Rate | Percent Poverty | Total Births |
|---------------------------|----------|------------|-------------------|------------------|---------------|--------------------------|---------------------|-----------------|--------------|
| Cattaraugus County | | | | | | | | | |
| West Valley | 14171 | 2 | | X | | | X | 14.0 | 46 |
| Erie County | | | | | | | | | |
| Collins | 14034 | 2 | | | X | | X | 17.2 | 67 |
| Wyoming County | | | | | | | | | |
| Warsaw | 14569 | 2 | X | X | | | | 15.9 | 173 |

References

1. US Census Bureau, 2010 Demographic Profile and 2009-2013 American Community Survey 5-Year Estimates; using American FactFinder; <http://factfinder.census.gov>, (Feb 18 2015).
2. New York State Department of Health; ZIP Code Perinatal Data Profile 2011-2013; unpublished data.
3. Kost, K., & Henshaw, S. (2014). *U.S. teenage pregnancies, births and abortions, 2010: National trends by age, race and ethnicity*: Guttmacher Institute. Retrieved January 23, 2015 from <http://www.guttmacher.org/pubs/USTPtrends10.pdf>
4. Martin JA, Hamilton BE, Osterman MJK, et al. Births: Final data for 2013. National vital statistics reports; vol 64 no 1. Hyattsville, MD: National Center for Health Statistics. 2015.
5. U.S. Department of Health and Human Services, Health Resources and Services Administration, Maternal and Child Health Bureau. *Child Health USA 2013*. Rockville, Maryland: U.S. Department of Health and Human Services, 2013.
6. National Center for Health Statistics, Centers for Disease Control, Mortality FastStats, Deaths: Final Data for 2013. Retrieved May 20, 2015 from <http://www.cdc.gov/nchs/deaths.htm>.

Appendix A

Demographics By Zip Code

| County | Zip Code | Total Population | Age (%) | | | Race / Ethnicity (%) | | | | | | Education (%) | | | Speaks Foreign Language at Home (%) | Participation in Labor Force (%) | Families Below Poverty Level (%) |
|--------------------|----------------|------------------|-------------|--------------|--------------|----------------------|-------------|-------------|-------------|-------------|-------------|---------------|----------------------|-----------------------------|-------------------------------------|----------------------------------|----------------------------------|
| | | | Less Than 5 | Less Than 18 | At Least 65 | White | Black | AIAN | Asian | Other | Hispanic | Family Size | At Least High School | Bachelor's Degree or Higher | | | |
| Allegany | 14060 | 443 | 5.2 | 22.2 | 16.5 | 98.0 | 0.2 | 0.0 | 0.0 | 0.2 | 1.8 | 2.89 | 78.9 | 12.4 | 1.0 | 52.3 | 7.2 |
| Allegany | 14709 | 1535 | 7.2 | 24.2 | 17.1 | 97.3 | 0.5 | 0.3 | 0.9 | 0.5 | 0.9 | 2.96 | 86.5 | 17.2 | 3.2 | 55.0 | 10.8 |
| Allegany | 14711 | 1766 | 7.9 | 25.9 | 14.6 | 97.3 | 0.3 | 0.2 | 0.6 | 0.1 | 0.9 | 3.05 | 85.7 | 14.3 | 6.2 | 59.0 | 17.8 |
| Allegany | 14714 | 487 | 8.0 | 27.7 | 15.2 | 97.5 | 0.4 | 0.4 | 0.0 | 0.4 | 0.4 | 3.40 | 76.1 | 12.0 | 6.9 | 59.9 | 5.8 |
| Allegany | 14715 | 2747 | 6.3 | 26.1 | 13.9 | 98.2 | 0.5 | 0.3 | 0.4 | 0.0 | 0.6 | 3.02 | 87.5 | 12.7 | 1.6 | 60.7 | 15.9 |
| Allegany | 14721 | 230 | 5.2 | 20.0 | 14.8 | 99.6 | 0.0 | 0.0 | 0.0 | 0.0 | 0.0 | 2.92 | 96.4 | 7.1 | 2.0 | 62.7 | 8.7 |
| Allegany | 14727 | 5450 | 5.1 | 21.0 | 17.7 | 97.2 | 0.5 | 0.2 | 0.3 | 0.8 | 1.4 | 2.84 | 92.5 | 19.8 | 5.2 | 62.1 | 12.0 |
| Allegany | 14735 | 2751 | 7.9 | 28.9 | 15.0 | 98.6 | 0.3 | 0.5 | 0.0 | 0.1 | 1.2 | 3.16 | 84.9 | 16.8 | 4.9 | 60.8 | 20.9 |
| Allegany | 14739 | 2903 | 7.0 | 25.0 | 15.8 | 97.0 | 0.6 | 0.4 | 0.1 | 0.4 | 1.9 | 3.03 | 82.6 | 11.6 | 6.2 | 54.5 | 24.9 |
| Allegany | 14744 | 2094 | 3.2 | 13.8 | 11.3 | 92.3 | 1.7 | 0.1 | 3.9 | 0.6 | 2.0 | 3.21 | 85.6 | 53.1 | 14.1 | 52.6 | 16.1 |
| Allegany | 14754 | 667 | 4.9 | 22.2 | 16.2 | 98.5 | 0.1 | 0.3 | 0.3 | 0.0 | 0.4 | 2.84 | 83.8 | 9.3 | 5.9 | 58.2 | 11.6 |
| Allegany | 14770 | 2963 | 6.5 | 25.2 | 15.1 | 97.1 | 0.7 | 0.3 | 0.3 | 0.2 | 0.8 | 2.94 | 92.4 | 18.9 | 1.5 | 62.9 | 10.5 |
| Allegany | 14777 | 667 | 4.8 | 22.2 | 21.0 | 98.5 | 0.6 | 0.1 | 0.3 | 0.0 | 0.7 | 2.88 | 89.1 | 20.2 | 3.5 | 62.6 | 5.5 |
| Allegany | 14802 | 4135 | 0.5 | 2.6 | 2.9 | 84.1 | 7.1 | 0.2 | 4.6 | 1.5 | 4.4 | 2.82 | 99.0 | 88.1 | 13.9 | 51.6 | 45.3 |
| Allegany | 14803 | 1174 | 5.5 | 21.1 | 15.1 | 97.0 | 0.3 | 0.1 | 1.4 | 0.1 | 1.0 | 2.86 | 97.5 | 48.6 | 5.4 | 65.8 | 11.5 |
| Allegany | 14804 | 1479 | 6.3 | 23.6 | 14.9 | 97.1 | 0.1 | 0.1 | 1.1 | 0.0 | 1.0 | 2.97 | 93.8 | 27.9 | 3.9 | 64.5 | 13.1 |
| Allegany | 14806 | 2269 | 7.2 | 26.6 | 14.5 | 97.9 | 0.3 | 0.1 | 0.1 | 0.4 | 1.1 | 3.03 | 88.9 | 17.4 | 0.1 | 56.1 | 17.3 |
| Allegany | 14813 | 2520 | 4.6 | 22.0 | 16.4 | 95.7 | 1.7 | 0.3 | 0.3 | 0.5 | 1.7 | 2.88 | 87.3 | 17.9 | 4.9 | 59.3 | 13.7 |
| Allegany | 14822 | 1169 | 4.6 | 22.2 | 16.0 | 98.5 | 0.1 | 0.3 | 0.0 | 0.3 | 0.6 | 2.87 | 86.5 | 10.4 | 2.9 | 54.4 | 11.1 |
| Allegany | 14880 | 1668 | 4.7 | 22.2 | 16.1 | 98.3 | 0.4 | 0.0 | 0.2 | 0.4 | 1.1 | 2.93 | 90.5 | 12.8 | 1.5 | 55.5 | 11.2 |
| Allegany | 14895 | 9616 | 5.9 | 22.0 | 19.9 | 97.2 | 0.4 | 0.3 | 0.7 | 0.3 | 0.9 | 2.88 | 88.4 | 18.1 | 3.2 | 58.3 | 18.9 |
| Allegany | 14897 | 980 | 5.5 | 27.2 | 14.9 | 98.2 | 0.4 | 0.2 | 0.2 | 0.1 | 0.7 | 3.10 | 84.7 | 8.8 | 0.0 | 54.3 | 17.1 |
| Allegany | Average | 2656.56 | 5.26 | 21.74 | 15.18 | 96.45 | 0.96 | 0.22 | 0.86 | 0.36 | 1.31 | 2.95 | 89.22 | 24.98 | 4.82 | 58.34 | 16.29 |
| Cattaraugus | 14042 | 3969 | 7.2 | 24.8 | 13.4 | 97.2 | 0.3 | 0.3 | 0.3 | 0.5 | 1.4 | 2.97 | 83.4 | 10.4 | 3.6 | 64.4 | 18.7 |
| Cattaraugus | 14065 | 1896 | 7.1 | 26.3 | 12.1 | 99.3 | 0.1 | 0.1 | 0.1 | 0.1 | 0.6 | 3.04 | 77.6 | 9.6 | 3.2 | 57.8 | 13.2 |
| Cattaraugus | 14070 | 6732 | 4.3 | 17.2 | 13.8 | 77.5 | 10.2 | 8.8 | 0.3 | 1.7 | 5.2 | 2.94 | 80.8 | 12.9 | 11.2 | 44.2 | 12.0 |
| Cattaraugus | 14101 | 1905 | 5.6 | 22.7 | 19.5 | 96.7 | 0.7 | 0.8 | 0.1 | 0.1 | 0.9 | 2.95 | 87.3 | 14.9 | 2.5 | 65.2 | 13.2 |
| Cattaraugus | 14129 | 1591 | 6.5 | 24.6 | 14.6 | 76.5 | 0.8 | 20.3 | 0.4 | 0.0 | 1.2 | 3.03 | 92.3 | 12.1 | 10.6 | 62.5 | 15.1 |
| Cattaraugus | 14138 | 2018 | 7.3 | 26.9 | 15.4 | 96.4 | 0.7 | 1.1 | 0.1 | 0.1 | 1.8 | 3.08 | 86.4 | 12.6 | 9.6 | 63.0 | 16.1 |
| Cattaraugus | 14171 | 2077 | 4.9 | 21.3 | 15.0 | 97.5 | 1.2 | 0.2 | 0.1 | 0.0 | 1.0 | 2.91 | 88.3 | 16.7 | 0.5 | 55.6 | 14.0 |
| Cattaraugus | 14706 | 6356 | 5.2 | 22.1 | 17.8 | 95.9 | 0.6 | 0.6 | 1.4 | 0.3 | 1.2 | 2.91 | 92.8 | 25.3 | 3.7 | 59.6 | 14.8 |
| Cattaraugus | 14719 | 3497 | 5.9 | 26.7 | 14.6 | 98.0 | 0.6 | 0.7 | 0.1 | 0.1 | 1.1 | 3.11 | 82.5 | 13.5 | 10.9 | 57.4 | 19.8 |
| Cattaraugus | 14726 | 2156 | 13.5 | 43.2 | 9.0 | 98.2 | 0.3 | 0.4 | 0.0 | 0.4 | 0.8 | 4.37 | 59.1 | 7.2 | 39.0 | 52.6 | 29.1 |
| Cattaraugus | 14729 | 948 | 6.1 | 25.0 | 11.9 | 97.8 | 0.5 | 0.3 | 0.3 | 0.2 | 0.3 | 3.14 | 90.6 | 11.9 | 2.8 | 72.8 | 8.8 |
| Cattaraugus | 14731 | 1576 | 3.6 | 17.3 | 20.9 | 97.8 | 0.1 | 0.4 | 0.4 | 0.1 | 1.8 | 2.72 | 93.0 | 32.6 | 5.1 | 64.5 | 5.8 |
| Cattaraugus | 14737 | 4252 | 6.1 | 23.5 | 15.1 | 97.1 | 0.3 | 0.4 | 0.4 | 0.4 | 1.8 | 2.94 | 86.4 | 12.8 | 2.9 | 57.5 | 19.9 |
| Cattaraugus | 14738 | 3651 | 4.8 | 22.7 | 18.8 | 97.5 | 0.4 | 0.5 | 0.1 | 0.4 | 1.3 | 2.93 | 91.6 | 23.9 | 1.1 | 62.0 | 10.3 |
| Cattaraugus | 14741 | 1873 | 5.8 | 23.7 | 17.1 | 98.7 | 0.1 | 0.5 | 0.1 | 0.1 | 1.2 | 2.99 | 86.0 | 24.7 | 3.8 | 65.4 | 13.8 |
| Cattaraugus | 14743 | 1783 | 6.4 | 23.3 | 14.3 | 97.4 | 1.2 | 0.1 | 0.2 | 0.0 | 0.3 | 2.93 | 86.2 | 12.3 | 2.7 | 61.8 | 22.2 |
| Cattaraugus | 14748 | 746 | 7.2 | 28.2 | 16.2 | 74.5 | 0.4 | 23.2 | 0.3 | 0.0 | 2.4 | 3.03 | 74.6 | 7.1 | 13.4 | 52.6 | 39.0 |
| Cattaraugus | 14753 | 1166 | 5.4 | 22.7 | 16.0 | 96.6 | 0.8 | 0.9 | 0.4 | 0.0 | 0.4 | 2.90 | 87.2 | 9.9 | 0.3 | 59.2 | 13.2 |
| Cattaraugus | 14755 | 2916 | 5.2 | 21.6 | 14.3 | 95.7 | 1.1 | 1.7 | 0.3 | 0.2 | 1.0 | 2.91 | 87.2 | 14.4 | 3.9 | 59.9 | 15.1 |
| Cattaraugus | 14760 | 18775 | 6.1 | 21.9 | 16.4 | 92.0 | 3.1 | 0.6 | 1.2 | 0.6 | 2.0 | 2.87 | 90.7 | 22.4 | 2.9 | 65.2 | 20.0 |
| Cattaraugus | 14772 | 4255 | 8.1 | 29.2 | 15.1 | 96.5 | 0.5 | 1.0 | 0.2 | 0.3 | 2.2 | 3.14 | 87.9 | 14.7 | 6.7 | 62.2 | 19.6 |
| Cattaraugus | 14779 | 6932 | 7.5 | 24.1 | 15.4 | 76.5 | 0.8 | 17.9 | 0.4 | 0.8 | 3.1 | 2.89 | 85.7 | 12.0 | 6.6 | 58.4 | 24.9 |
| Cattaraugus | Average | 3685.00 | 6.35 | 24.50 | 15.30 | 93.24 | 1.13 | 3.67 | 0.33 | 0.29 | 1.50 | 3.03 | 85.35 | 15.18 | 6.68 | 60.17 | 17.21 |
| Chautauqua | 14048 | 15072 | 6.4 | 22.0 | 17.2 | 80.2 | 5.4 | 0.9 | 0.4 | 9.7 | 23.2 | 2.91 | 82.4 | 17.1 | 18.0 | 60.2 | 24.5 |
| Chautauqua | 14062 | 3329 | 4.7 | 20.7 | 15.7 | 97.4 | 0.4 | 0.8 | 0.2 | 0.1 | 1.9 | 2.88 | 88.5 | 10.9 | 4.6 | 62.6 | 14.5 |

Demographics By Zip Code

| County | Zip Code | Total Population | Less Than 5 | Less Than 18 | At Least 65 | White | Black | AIAN | Asian | Other | Hispanic | Family Size | At Least High School | Bachelor's Degree or Higher | Speaks Foreign Language at Home (%) | Participation in Labor Force (%) | Families Below Poverty Level (%) |
|-------------------|----------------|------------------|-------------|--------------|--------------|--------------|-------------|-------------|-------------|-------------|-------------|-------------|----------------------|-----------------------------|-------------------------------------|----------------------------------|----------------------------------|
| Chautauqua | 14063 | 14870 | 3.6 | 14.9 | 12.6 | 94.6 | 1.4 | 0.3 | 1.3 | 1.0 | 3.9 | 2.85 | 94.4 | 35.4 | 6.5 | 58.5 | 20.0 |
| Chautauqua | 14136 | 5033 | 5.9 | 23.2 | 16.0 | 95.1 | 0.8 | 1.6 | 0.4 | 0.5 | 2.5 | 2.93 | 89.0 | 15.7 | 4.0 | 59.9 | 19.5 |
| Chautauqua | 14701 | 40730 | 6.6 | 23.3 | 16.4 | 90.6 | 3.3 | 0.5 | 0.5 | 1.8 | 6.9 | 2.91 | 86.9 | 18.1 | 6.9 | 60.7 | 23.9 |
| Chautauqua | 14710 | 3540 | 5.2 | 21.4 | 17.5 | 98.8 | 0.2 | 0.1 | 0.3 | 0.1 | 0.8 | 2.86 | 90.6 | 19.9 | 1.7 | 61.6 | 12.0 |
| Chautauqua | 14712 | 3342 | 3.7 | 21.0 | 20.9 | 98.5 | 0.3 | 0.0 | 0.4 | 0.1 | 0.6 | 2.83 | 93.4 | 33.6 | 1.0 | 58.4 | 5.7 |
| Chautauqua | 14716 | 3104 | 5.2 | 20.5 | 11.6 | 83.1 | 11.5 | 0.6 | 0.4 | 3.0 | 8.1 | 3.06 | 74.2 | 9.6 | 11.0 | 40.3 | 21.1 |
| Chautauqua | 14718 | 2163 | 3.7 | 20.0 | 14.6 | 91.0 | 6.1 | 0.3 | 0.5 | 0.6 | 3.4 | 2.82 | 86.2 | 20.0 | 4.6 | 49.6 | 15.1 |
| Chautauqua | 14723 | 1295 | 6.6 | 26.7 | 14.0 | 98.2 | 0.2 | 0.2 | 0.2 | 0.2 | 1.8 | 3.12 | 85.1 | 18.1 | 3.2 | 64.6 | 12.6 |
| Chautauqua | 14724 | 2540 | 7.8 | 30.1 | 15.4 | 98.5 | 0.2 | 0.0 | 0.2 | 0.2 | 0.6 | 3.28 | 81.3 | 14.2 | 18.6 | 60.8 | 15.3 |
| Chautauqua | 14728 | 1031 | 5.8 | 22.2 | 17.4 | 97.7 | 0.1 | 0.1 | 0.1 | 0.7 | 2.5 | 2.94 | 73.4 | 23.9 | 17.3 | 76.0 | 18.4 |
| Chautauqua | 14733 | 3833 | 4.9 | 22.1 | 18.5 | 97.5 | 0.6 | 0.2 | 0.2 | 0.4 | 2.4 | 2.84 | 89.6 | 14.9 | 3.6 | 61.6 | 18.3 |
| Chautauqua | 14736 | 282 | 5.0 | 26.6 | 16.3 | 96.8 | 0.0 | 0.0 | 1.4 | 0.4 | 0.7 | 3.14 | 88.5 | 16.9 | 0.0 | 55.8 | 7.3 |
| Chautauqua | 14740 | 1431 | 5.0 | 21.0 | 26.8 | 98.5 | 0.0 | 0.3 | 0.1 | 0.1 | 1.2 | 2.92 | 86.4 | 15.4 | 4.9 | 54.7 | 12.5 |
| Chautauqua | 14747 | 2289 | 5.5 | 22.6 | 14.2 | 97.9 | 0.0 | 0.5 | 0.3 | 0.3 | 1.0 | 2.92 | 88.0 | 14.2 | 2.0 | 67.4 | 10.6 |
| Chautauqua | 14750 | 4426 | 4.3 | 20.4 | 21.8 | 96.2 | 0.6 | 0.2 | 1.4 | 0.4 | 1.2 | 2.83 | 92.2 | 34.6 | 3.9 | 63.2 | 10.1 |
| Chautauqua | 14757 | 3487 | 5.0 | 21.1 | 18.2 | 95.8 | 2.7 | 0.1 | 0.2 | 0.2 | 1.9 | 2.85 | 89.5 | 27.6 | 12.0 | 48.5 | 15.4 |
| Chautauqua | 14767 | 2088 | 9.2 | 31.5 | 13.6 | 97.9 | 0.2 | 0.2 | 0.4 | 0.1 | 1.1 | 3.38 | 80.7 | 18.6 | 21.4 | 60.2 | 22.7 |
| Chautauqua | 14769 | 919 | 4.9 | 20.2 | 18.3 | 97.0 | 0.9 | 0.1 | 0.1 | 0.8 | 2.1 | 2.90 | 89.3 | 8.5 | 3.6 | 50.4 | 11.6 |
| Chautauqua | 14775 | 2537 | 5.7 | 23.1 | 15.1 | 97.6 | 0.2 | 0.2 | 0.0 | 0.5 | 1.3 | 2.96 | 79.2 | 12.8 | 3.3 | 59.8 | 16.2 |
| Chautauqua | 14781 | 2225 | 6.6 | 27.6 | 13.3 | 97.7 | 0.2 | 0.2 | 0.2 | 0.6 | 1.8 | 3.26 | 83.6 | 17.6 | 10.5 | 60.8 | 15.9 |
| Chautauqua | 14782 | 2401 | 5.5 | 23.8 | 14.6 | 97.3 | 0.7 | 0.2 | 0.2 | 0.4 | 1.5 | 3.05 | 86.7 | 13.7 | 1.1 | 66.3 | 16.3 |
| Chautauqua | 14784 | 1033 | 5.7 | 24.1 | 13.6 | 97.1 | 0.1 | 0.5 | 0.0 | 1.0 | 2.1 | 3.08 | 81.7 | 10.9 | 0.0 | 47.6 | 24.6 |
| Chautauqua | 14787 | 5121 | 4.8 | 20.5 | 20.3 | 97.1 | 0.7 | 0.1 | 0.4 | 0.6 | 3.4 | 2.90 | 91.0 | 26.2 | 4.3 | 54.5 | 12.4 |
| Chautauqua | Average | 5124.84 | 5.49 | 22.82 | 16.56 | 95.52 | 1.47 | 0.33 | 0.39 | 0.95 | 3.12 | 2.98 | 86.07 | 18.74 | 6.72 | 58.56 | 15.86 |
| Erie | 14001 | 9464 | 5.0 | 21.3 | 17.6 | 96.9 | 0.5 | 1.1 | 0.4 | 0.1 | 0.9 | 2.96 | 91.0 | 21.2 | 1.6 | 67.9 | 6.5 |
| Erie | 14004 | 12704 | 3.7 | 17.9 | 15.6 | 88.5 | 9.2 | 0.3 | 0.4 | 1.0 | 2.3 | 2.96 | 88.2 | 18.8 | 6.5 | 56.1 | 10.3 |
| Erie | 14006 | 9858 | 4.9 | 21.1 | 15.0 | 95.8 | 0.7 | 1.6 | 0.2 | 0.3 | 1.8 | 2.95 | 91.8 | 20.6 | 4.7 | 63.2 | 8.2 |
| Erie | 14025 | 3039 | 4.8 | 24.7 | 12.9 | 97.6 | 0.1 | 0.5 | 0.4 | 0.4 | 0.8 | 3.01 | 95.8 | 37.8 | 2.0 | 76.6 | 2.9 |
| Erie | 14026 | 674 | 5.8 | 23.9 | 16.5 | 99.4 | 0.0 | 0.0 | 0.1 | 0.1 | 2.7 | 3.09 | 87.9 | 29.7 | 6.2 | 75.0 | 5.9 |
| Erie | 14030 | 1807 | 6.0 | 21.0 | 15.6 | 96.3 | 0.3 | 0.9 | 1.4 | 0.3 | 0.9 | 3.03 | 95.1 | 13.1 | 1.6 | 70.5 | 8.2 |
| Erie | 14031 | 9392 | 3.8 | 22.3 | 21.4 | 97.0 | 0.6 | 0.2 | 1.3 | 0.3 | 1.1 | 3.02 | 95.4 | 41.5 | 7.8 | 62.3 | 4.8 |
| Erie | 14032 | 7989 | 6.1 | 31.7 | 10.8 | 95.0 | 1.1 | 0.1 | 2.6 | 0.2 | 1.3 | 3.38 | 97.4 | 45.8 | 4.4 | 72.6 | 4.1 |
| Erie | 14033 | 2219 | 5.3 | 23.0 | 13.5 | 98.7 | 0.2 | 0.0 | 0.4 | 0.3 | 0.9 | 3.01 | 98.3 | 29.7 | 4.2 | 73.9 | 6.7 |
| Erie | 14034 | 2742 | 3.8 | 14.7 | 10.9 | 78.4 | 16.5 | 0.8 | 0.1 | 2.8 | 6.1 | 2.98 | 82.7 | 13.9 | 11.7 | 32.3 | 17.2 |
| Erie | 14043 | 24742 | 4.3 | 17.9 | 19.3 | 95.9 | 1.4 | 0.2 | 0.9 | 0.3 | 1.6 | 2.86 | 90.6 | 20.5 | 7.1 | 64.4 | 9.2 |
| Erie | 14047 | 6440 | 4.4 | 21.0 | 13.7 | 97.1 | 0.7 | 0.9 | 0.3 | 0.2 | 1.8 | 2.97 | 91.0 | 25.5 | 5.6 | 67.2 | 7.0 |
| Erie | 14051 | 19533 | 4.8 | 25.9 | 12.5 | 88.5 | 2.2 | 0.1 | 7.2 | 0.4 | 1.8 | 3.14 | 95.9 | 61.0 | 11.9 | 72.8 | 2.9 |
| Erie | 14052 | 17329 | 4.3 | 22.6 | 18.0 | 98.1 | 0.3 | 0.1 | 0.5 | 0.3 | 0.9 | 3.01 | 94.7 | 43.6 | 3.6 | 65.6 | 4.9 |
| Erie | 14055 | 1405 | 3.3 | 19.4 | 16.2 | 98.7 | 0.2 | 0.2 | 0.1 | 0.0 | 1.1 | 2.89 | 90.7 | 22.3 | 1.8 | 63.8 | 5.6 |
| Erie | 14057 | 8116 | 4.3 | 22.7 | 16.2 | 98.0 | 0.4 | 0.3 | 0.3 | 0.4 | 1.7 | 3.03 | 92.8 | 28.4 | 2.8 | 63.6 | 5.2 |
| Erie | 14059 | 8933 | 3.8 | 20.6 | 19.6 | 99.0 | 0.2 | 0.1 | 0.2 | 0.1 | 1.7 | 2.93 | 95.7 | 34.6 | 4.8 | 64.4 | 3.6 |
| Erie | 14068 | 7150 | 5.1 | 22.4 | 22.2 | 88.4 | 3.3 | 0.1 | 6.9 | 0.2 | 1.3 | 3.11 | 92.3 | 43.6 | 15.2 | 56.9 | 7.0 |
| Erie | 14069 | 844 | 5.5 | 20.0 | 13.3 | 98.5 | 0.4 | 0.1 | 0.4 | 0.0 | 0.2 | 2.82 | 93.8 | 29.8 | 0.0 | 62.9 | 0.1 |
| Erie | 14072 | 20374 | 4.8 | 23.1 | 14.4 | 93.6 | 2.2 | 0.5 | 2.3 | 0.4 | 1.8 | 3.03 | 96.3 | 42.4 | 7.8 | 67.8 | 6.1 |
| Erie | 14075 | 41937 | 4.6 | 21.8 | 17.3 | 97.3 | 0.6 | 0.3 | 0.6 | 0.3 | 1.8 | 2.95 | 93.5 | 31.7 | 3.9 | 66.8 | 6.1 |
| Erie | 14080 | 4330 | 5.4 | 22.6 | 13.0 | 97.8 | 0.4 | 0.5 | 0.2 | 0.1 | 0.8 | 2.96 | 92.0 | 19.4 | 3.1 | 66.5 | 9.0 |
| Erie | 14081 | 3095 | 6.3 | 24.0 | 16.4 | 61.2 | 0.9 | 35.7 | 0.3 | 0.0 | 2.7 | 3.06 | 85.2 | 21.6 | 10.3 | 53.3 | 16.1 |
| Erie | 14085 | 7353 | 7.2 | 26.5 | 10.0 | 97.9 | 0.4 | 0.4 | 0.5 | 0.3 | 1.8 | 3.17 | 95.9 | 36.4 | 3.4 | 75.6 | 5.0 |
| Erie | 14086 | 31847 | 5.2 | 24.2 | 13.3 | 97.4 | 0.9 | 0.2 | 0.5 | 0.2 | 1.3 | 3.10 | 95.2 | 34.0 | 4.6 | 73.1 | 4.6 |

Demographics By Zip Code

| County | Zip Code | Total Population | Less Than 5 | Less Than 18 | At Least 65 | White | Black | AIAN | Asian | Other | Hispanic | Family Size | At Least High School | Bachelor's Degree or Higher | Speaks Foreign Language at Home (%) | Participation in Labor Force (%) | Families Below Poverty Level (%) |
|-------------|----------------|------------------|-------------|--------------|--------------|--------------|--------------|-------------|-------------|-------------|-------------|-------------|----------------------|-----------------------------|-------------------------------------|----------------------------------|----------------------------------|
| Erie | 14091 | 1079 | 6.0 | 23.3 | 13.3 | 74.3 | 0.2 | 24.2 | 0.0 | 0.4 | 3.5 | 3.05 | 81.2 | 15.3 | 8.3 | 60.1 | 5.2 |
| Erie | 14102 | 1281 | 4.1 | 25.4 | 13.8 | 98.9 | 0.1 | 0.2 | 0.2 | 0.0 | 0.9 | 3.14 | 98.5 | 33.6 | 3.4 | 78.8 | 0.5 |
| Erie | 14111 | 3352 | 5.8 | 24.0 | 14.5 | 95.4 | 0.4 | 1.8 | 0.0 | 0.4 | 3.0 | 3.09 | 92.9 | 17.3 | 3.9 | 72.4 | 10.1 |
| Erie | 14127 | 29961 | 4.9 | 23.4 | 18.3 | 96.6 | 0.7 | 0.2 | 1.4 | 0.3 | 1.6 | 3.04 | 96.0 | 46.0 | 5.4 | 66.3 | 2.4 |
| Erie | 14139 | 2125 | 6.0 | 20.1 | 13.5 | 97.5 | 0.3 | 0.5 | 0.5 | 0.0 | 0.9 | 2.88 | 93.1 | 31.5 | 0.6 | 67.7 | 4.5 |
| Erie | 14141 | 7728 | 5.3 | 23.4 | 16.2 | 97.3 | 0.6 | 0.6 | 0.4 | 0.2 | 1.8 | 2.97 | 90.1 | 20.8 | 4.6 | 64.1 | 11.5 |
| Erie | 14150 | 41676 | 4.7 | 18.6 | 19.7 | 94.5 | 2.1 | 0.4 | 1.3 | 0.5 | 2.3 | 2.87 | 92.0 | 24.9 | 5.6 | 64.9 | 10.6 |
| Erie | 14170 | 2286 | 4.2 | 21.3 | 16.4 | 98.7 | 0.3 | 0.1 | 0.1 | 0.2 | 1.7 | 2.99 | 93.4 | 28.2 | 3.9 | 68.3 | 6.2 |
| Erie | 14201 | 11549 | 7.5 | 22.3 | 10.9 | 51.7 | 23.9 | 1.4 | 2.2 | 16.7 | 37.2 | 3.10 | 74.1 | 27.5 | 34.4 | 60.8 | 45.2 |
| Erie | 14202 | 3911 | 3.7 | 11.2 | 11.2 | 60.0 | 28.8 | 0.5 | 1.7 | 5.6 | 17.2 | 2.56 | 86.1 | 34.9 | 27.3 | 58.8 | 19.0 |
| Erie | 14203 | 1618 | 5.7 | 18.7 | 13.3 | 31.4 | 60.8 | 0.4 | 1.6 | 3.3 | 7.7 | 2.92 | 77.3 | 37.1 | 12.2 | 50.4 | 44.5 |
| Erie | 14204 | 8691 | 6.3 | 24.3 | 13.6 | 18.8 | 75.4 | 0.5 | 0.4 | 3.0 | 9.1 | 2.95 | 75.0 | 15.0 | 9.7 | 56.6 | 35.5 |
| Erie | 14206 | 20751 | 6.1 | 21.1 | 15.7 | 84.9 | 10.6 | 0.5 | 0.9 | 1.2 | 4.6 | 2.93 | 81.7 | 11.5 | 8.7 | 60.8 | 22.0 |
| Erie | 14207 | 23552 | 8.3 | 28.4 | 9.9 | 64.9 | 15.7 | 1.8 | 4.5 | 8.1 | 20.6 | 3.22 | 74.2 | 13.8 | 26.9 | 56.4 | 34.8 |
| Erie | 14208 | 11125 | 4.9 | 20.5 | 18.2 | 17.3 | 79.5 | 0.2 | 0.4 | 0.8 | 2.6 | 3.05 | 79.1 | 13.9 | 6.5 | 47.9 | 37.7 |
| Erie | 14209 | 7926 | 4.7 | 16.8 | 16.5 | 47.7 | 45.1 | 0.7 | 1.9 | 1.8 | 6.1 | 2.91 | 88.9 | 46.6 | 11.3 | 58.7 | 21.0 |
| Erie | 14210 | 14694 | 7.4 | 24.9 | 11.0 | 85.9 | 7.2 | 0.8 | 0.6 | 2.5 | 8.8 | 3.01 | 78.9 | 10.4 | 9.1 | 63.3 | 25.2 |
| Erie | 14211 | 22611 | 7.4 | 28.7 | 11.3 | 16.8 | 76.7 | 0.4 | 2.4 | 1.1 | 3.6 | 3.14 | 77.5 | 12.4 | 8.7 | 53.6 | 43.5 |
| Erie | 14212 | 10641 | 6.7 | 25.0 | 13.0 | 49.0 | 42.1 | 0.4 | 5.0 | 0.7 | 2.6 | 3.12 | 72.8 | 6.4 | 19.7 | 54.8 | 36.9 |
| Erie | 14213 | 24465 | 9.1 | 29.3 | 7.2 | 48.0 | 22.8 | 1.6 | 11.0 | 11.9 | 28.1 | 3.43 | 71.7 | 24.3 | 43.7 | 57.0 | 45.6 |
| Erie | 14214 | 19775 | 5.1 | 17.9 | 9.3 | 49.9 | 37.3 | 0.4 | 7.8 | 1.4 | 4.2 | 2.97 | 88.8 | 39.1 | 14.5 | 59.9 | 25.7 |
| Erie | 14215 | 39999 | 7.1 | 28.9 | 10.2 | 14.5 | 80.5 | 0.3 | 1.4 | 0.9 | 3.3 | 3.11 | 86.0 | 17.4 | 5.5 | 59.7 | 30.2 |
| Erie | 14216 | 22431 | 5.6 | 18.4 | 12.3 | 76.1 | 16.2 | 0.8 | 1.5 | 2.2 | 7.0 | 2.83 | 91.7 | 39.7 | 10.3 | 70.3 | 14.6 |
| Erie | 14217 | 23480 | 5.1 | 19.3 | 18.0 | 93.4 | 2.8 | 0.5 | 1.0 | 0.6 | 3.1 | 2.87 | 91.3 | 32.6 | 5.1 | 67.0 | 7.9 |
| Erie | 14218 | 19039 | 6.4 | 21.8 | 17.4 | 84.5 | 9.5 | 0.3 | 0.7 | 1.9 | 6.9 | 2.99 | 82.0 | 18.8 | 20.1 | 57.6 | 22.2 |
| Erie | 14219 | 11536 | 2.3 | 21.0 | 16.2 | 96.4 | 1.1 | 0.3 | 0.4 | 0.5 | 2.9 | 2.90 | 91.1 | 14.2 | 4.5 | 68.6 | 10.0 |
| Erie | 14220 | 24227 | 6.6 | 22.8 | 13.0 | 91.2 | 3.0 | 0.7 | 0.7 | 2.3 | 7.6 | 3.01 | 90.2 | 19.3 | 7.6 | 66.4 | 14.4 |
| Erie | 14221 | 53555 | 4.4 | 20.6 | 23.7 | 88.3 | 3.2 | 0.1 | 6.6 | 0.4 | 1.9 | 2.97 | 94.9 | 52.6 | 12.1 | 62.4 | 4.8 |
| Erie | 14222 | 14046 | 2.9 | 9.5 | 11.6 | 79.9 | 12.2 | 0.6 | 2.6 | 2.1 | 6.4 | 2.66 | 94.6 | 65.3 | 11.0 | 70.7 | 18.6 |
| Erie | 14223 | 22665 | 4.9 | 20.5 | 17.5 | 92.5 | 3.6 | 0.3 | 1.3 | 0.5 | 2.5 | 2.93 | 93.4 | 35.2 | 7.3 | 66.7 | 10.7 |
| Erie | 14224 | 39889 | 4.0 | 19.5 | 20.4 | 97.3 | 0.8 | 0.2 | 0.6 | 0.3 | 1.6 | 2.92 | 91.7 | 25.7 | 5.6 | 66.0 | 5.8 |
| Erie | 14225 | 33385 | 5.2 | 19.2 | 18.9 | 87.4 | 8.6 | 0.2 | 1.4 | 0.5 | 2.3 | 2.84 | 91.1 | 21.4 | 6.0 | 67.8 | 11.7 |
| Erie | 14226 | 29267 | 5.8 | 20.9 | 15.8 | 81.5 | 8.9 | 0.2 | 6.6 | 0.5 | 2.5 | 2.91 | 95.3 | 54.4 | 13.0 | 65.5 | 10.1 |
| Erie | 14227 | 23426 | 4.3 | 16.2 | 23.6 | 92.0 | 4.3 | 0.2 | 2.2 | 0.3 | 1.5 | 2.78 | 87.8 | 21.0 | 7.8 | 60.0 | 7.5 |
| Erie | 14228 | 20857 | 4.9 | 19.1 | 13.4 | 79.1 | 8.3 | 0.3 | 9.1 | 0.8 | 2.8 | 3.02 | 94.9 | 45.1 | 20.4 | 63.2 | 18.5 |
| Erie | Average | 15198.58 | 5.27 | 21.71 | 15.07 | 81.41 | 12.29 | 1.46 | 1.82 | 1.38 | 4.36 | 2.99 | 89.31 | 29.00 | 9.02 | 63.81 | 14.03 |
| Genesee | 14005 | 1986 | 6.6 | 27.6 | 12.2 | 97.5 | 0.1 | 0.1 | 0.4 | 1.2 | 1.7 | 3.22 | 91.7 | 16.2 | 4.8 | 71.6 | 7.2 |
| Genesee | 14013 | 1751 | 6.0 | 24.0 | 15.6 | 69.3 | 0.3 | 28.6 | 0.1 | 0.6 | 1.7 | 3.12 | 83.8 | 12.7 | 7.9 | 60.6 | 10.2 |
| Genesee | 14020 | 23306 | 5.7 | 20.2 | 17.5 | 89.6 | 5.4 | 0.4 | 1.0 | 1.0 | 3.3 | 2.89 | 89.7 | 20.5 | 5.5 | 62.4 | 18.5 |
| Genesee | 14036 | 5201 | 5.0 | 21.6 | 14.8 | 97.4 | 0.5 | 0.4 | 0.2 | 0.3 | 1.1 | 2.97 | 91.4 | 19.6 | 1.7 | 66.3 | 11.9 |
| Genesee | 14040 | 2217 | 4.6 | 20.3 | 15.8 | 99.3 | 0.1 | 0.0 | 0.1 | 0.0 | 0.9 | 2.97 | 92.2 | 20.2 | 1.9 | 64.8 | 6.3 |
| Genesee | 14054 | 1344 | 7.6 | 24.0 | 12.3 | 96.3 | 0.7 | 0.1 | 0.7 | 0.7 | 2.6 | 3.00 | 90.0 | 21.0 | 3.1 | 63.6 | 12.3 |
| Genesee | 14058 | 2285 | 5.8 | 24.4 | 13.0 | 88.4 | 2.1 | 0.3 | 0.5 | 6.7 | 10.5 | 3.07 | 85.9 | 23.8 | 11.4 | 72.6 | 6.4 |
| Genesee | 14125 | 3782 | 5.6 | 24.8 | 12.9 | 95.0 | 1.4 | 0.6 | 0.2 | 1.1 | 3.2 | 3.14 | 85.1 | 14.6 | 2.1 | 67.6 | 8.5 |
| Genesee | 14143 | 1214 | 4.9 | 19.6 | 17.5 | 97.4 | 0.7 | 0.4 | 0.2 | 0.6 | 1.2 | 2.80 | 84.3 | 16.1 | 3.8 | 67.0 | 7.7 |
| Genesee | 14416 | 3817 | 4.8 | 22.8 | 14.4 | 97.4 | 0.6 | 0.1 | 0.6 | 0.2 | 1.6 | 3.06 | 94.2 | 25.5 | 3.1 | 66.8 | 8.5 |
| Genesee | 14422 | 2468 | 5.3 | 22.5 | 13.3 | 96.4 | 0.4 | 0.4 | 0.2 | 0.9 | 2.8 | 3.01 | 95.2 | 18.3 | 1.3 | 68.4 | 5.3 |
| Genesee | 14482 | 8275 | 6.2 | 23.3 | 15.2 | 95.6 | 1.8 | 0.3 | 0.3 | 0.5 | 2.0 | 2.94 | 91.9 | 27.3 | 1.5 | 64.6 | 8.8 |
| Genesee | 14525 | 2865 | 4.9 | 23.1 | 12.6 | 97.6 | 0.6 | 0.1 | 0.3 | 0.5 | 1.6 | 3.01 | 92.6 | 19.5 | 1.5 | 70.6 | 11.1 |

Demographics By Zip Code

| County | Zip Code | Total Population | Less Than 5 | Less Than 18 | At Least 65 | White | Black | AIAN | Asian | Other | Hispanic | Family Size | At Least High School | Bachelor's Degree or Higher | Speaks Foreign Language at Home (%) | Participation in Labor Force (%) | Families Below Poverty Level (%) |
|----------------|----------------|------------------|-------------|--------------|--------------|--------------|-------------|-------------|-------------|-------------|-------------|-------------|----------------------|-----------------------------|-------------------------------------|----------------------------------|----------------------------------|
| Genesee | Average | 4654.69 | 5.62 | 22.94 | 14.39 | 93.63 | 1.13 | 2.45 | 0.37 | 1.10 | 2.63 | 3.02 | 89.85 | 19.64 | 3.82 | 66.68 | 9.44 |
| Niagara | 14008 | 1467 | 5.2 | 24.3 | 12.5 | 95.2 | 1.2 | 0.9 | 0.1 | 2.1 | 4.0 | 3.24 | 88.4 | 13.8 | 0.7 | 70.3 | 12.0 |
| Niagara | 14012 | 2362 | 6.1 | 25.7 | 14.6 | 97.1 | 0.4 | 0.7 | 0.3 | 0.2 | 3.7 | 3.06 | 93.8 | 13.2 | 6.1 | 55.3 | 12.3 |
| Niagara | 14028 | 1595 | 4.6 | 22.5 | 15.8 | 96.3 | 0.4 | 0.5 | 0.8 | 0.1 | 1.9 | 2.97 | 93.1 | 17.4 | 1.1 | 60.2 | 15.8 |
| Niagara | 14067 | 5040 | 5.3 | 23.7 | 14.3 | 96.6 | 0.6 | 0.6 | 0.3 | 0.5 | 1.5 | 3.02 | 88.1 | 18.4 | 2.6 | 57.7 | 12.1 |
| Niagara | 14092 | 11086 | 4.4 | 18.3 | 25.2 | 94.5 | 0.9 | 2.1 | 0.9 | 0.2 | 1.4 | 2.86 | 93.7 | 40.5 | 5.4 | 59.5 | 6.0 |
| Niagara | 14094 | 50666 | 5.9 | 22.5 | 13.8 | 90.8 | 5.1 | 0.4 | 0.7 | 0.6 | 2.5 | 2.96 | 90.0 | 22.6 | 4.2 | 62.9 | 13.4 |
| Niagara | 14105 | 4566 | 5.1 | 23.8 | 13.7 | 96.3 | 0.4 | 0.8 | 0.4 | 0.6 | 1.6 | 2.96 | 89.3 | 19.8 | 3.5 | 65.7 | 8.6 |
| Niagara | 14108 | 5882 | 4.4 | 22.9 | 17.1 | 96.6 | 0.7 | 0.3 | 0.4 | 0.5 | 1.2 | 2.96 | 91.2 | 19.4 | 1.1 | 58.9 | 6.4 |
| Niagara | 14120 | 45100 | 5.1 | 20.8 | 15.9 | 96.3 | 1.0 | 0.4 | 0.9 | 0.3 | 1.6 | 2.96 | 91.8 | 27.0 | 4.9 | 66.0 | 10.0 |
| Niagara | 14131 | 5283 | 4.4 | 21.5 | 15.2 | 96.5 | 0.7 | 1.1 | 0.2 | 0.2 | 1.8 | 2.98 | 88.4 | 14.7 | 3.5 | 61.6 | 9.4 |
| Niagara | 14132 | 6218 | 4.5 | 20.4 | 16.1 | 92.2 | 1.9 | 3.7 | 0.2 | 0.2 | 1.3 | 2.95 | 94.3 | 23.3 | 3.8 | 66.8 | 5.1 |
| Niagara | 14172 | 3200 | 5.0 | 22.7 | 14.8 | 96.1 | 0.7 | 0.9 | 0.2 | 0.6 | 1.6 | 2.96 | 93.6 | 27.5 | 2.1 | 63.8 | 7.7 |
| Niagara | 14174 | 5794 | 4.5 | 21.6 | 17.1 | 97.1 | 0.3 | 0.6 | 0.5 | 0.4 | 1.5 | 2.92 | 94.4 | 33.4 | 3.7 | 60.3 | 5.0 |
| Niagara | 14301 | 12817 | 7.2 | 22.5 | 15.2 | 63.7 | 26.1 | 2.6 | 1.7 | 0.9 | 4.0 | 2.91 | 78.7 | 10.0 | 7.8 | 48.9 | 35.0 |
| Niagara | 14303 | 5981 | 6.4 | 22.5 | 14.8 | 60.9 | 27.1 | 3.0 | 1.0 | 1.6 | 4.5 | 2.88 | 85.6 | 15.6 | 5.8 | 55.5 | 28.0 |
| Niagara | 14304 | 30389 | 4.7 | 19.4 | 18.0 | 91.4 | 3.5 | 1.4 | 1.4 | 0.4 | 1.8 | 2.88 | 90.1 | 18.1 | 4.4 | 62.7 | 11.3 |
| Niagara | 14305 | 16898 | 6.1 | 23.7 | 14.6 | 62.4 | 31.1 | 1.6 | 0.6 | 0.7 | 2.8 | 2.99 | 86.9 | 16.0 | 4.4 | 59.7 | 26.3 |
| Niagara | Average | 12608.47 | 5.23 | 22.28 | 15.81 | 89.41 | 6.01 | 1.27 | 0.62 | 0.59 | 2.28 | 2.97 | 90.01 | 20.63 | 3.83 | 60.93 | 13.20 |
| Orleans | 14098 | 2958 | 5.1 | 25.7 | 13.9 | 95.1 | 1.2 | 0.8 | 0.2 | 0.8 | 2.7 | 3.13 | 84.2 | 13.6 | 6.9 | 59.9 | 6.4 |
| Orleans | 14103 | 11183 | 5.8 | 23.8 | 16.1 | 89.4 | 6.0 | 0.7 | 0.6 | 1.1 | 3.8 | 2.99 | 87.3 | 17.8 | 8.0 | 60.4 | 17.3 |
| Orleans | 14411 | 14491 | 5.1 | 20.2 | 13.8 | 83.4 | 11.4 | 0.5 | 0.6 | 1.8 | 5.8 | 3.00 | 83.0 | 14.8 | 9.4 | 47.5 | 16.7 |
| Orleans | 14470 | 8016 | 5.5 | 22.7 | 13.8 | 96.3 | 1.0 | 0.3 | 0.2 | 0.9 | 2.4 | 2.96 | 88.0 | 14.3 | 3.9 | 66.3 | 9.5 |
| Orleans | 14476 | 2288 | 5.2 | 23.0 | 13.8 | 96.8 | 0.6 | 0.7 | 0.3 | 0.4 | 2.0 | 2.97 | 94.4 | 21.2 | 1.9 | 64.0 | 12.1 |
| Orleans | 14477 | 1732 | 5.4 | 23.9 | 14.3 | 93.6 | 1.9 | 0.9 | 0.2 | 2.0 | 3.8 | 3.09 | 84.5 | 30.2 | 3.9 | 65.4 | 2.8 |
| Orleans | 14571 | 1176 | 2.7 | 17.9 | 16.1 | 93.5 | 2.6 | 0.7 | 0.1 | 0.2 | 2.6 | 2.85 | 80.5 | 15.2 | 1.0 | 50.5 | 9.0 |
| Orleans | Average | 5977.71 | 4.97 | 22.46 | 14.54 | 92.59 | 3.53 | 0.66 | 0.31 | 1.03 | 3.30 | 3.00 | 85.99 | 18.16 | 5.00 | 59.14 | 10.54 |
| Wyoming | 14009 | 5672 | 6.0 | 23.3 | 14.7 | 97.7 | 0.3 | 0.3 | 0.5 | 0.2 | 1.0 | 2.93 | 89.3 | 16.4 | 2.7 | 64.9 | 8.6 |
| Wyoming | 14011 | 9822 | 3.3 | 14.4 | 9.5 | 71.8 | 23.3 | 0.4 | 0.4 | 3.5 | 6.9 | 2.99 | 81.6 | 12.4 | 9.7 | 36.7 | 5.0 |
| Wyoming | 14024 | 1688 | 7.3 | 26.7 | 12.6 | 97.8 | 0.9 | 0.2 | 0.2 | 0.1 | 0.8 | 3.19 | 84.8 | 15.0 | 1.3 | 65.5 | 9.4 |
| Wyoming | 14037 | 1166 | 4.1 | 19.9 | 16.0 | 98.5 | 0.5 | 0.3 | 0.2 | 0.0 | 0.8 | 2.98 | 91.1 | 29.6 | 2.2 | 65.3 | 6.7 |
| Wyoming | 14066 | 1318 | 4.1 | 23.3 | 13.3 | 99.1 | 0.1 | 0.5 | 0.0 | 0.2 | 1.0 | 2.96 | 91.5 | 9.6 | 2.2 | 61.3 | 7.2 |
| Wyoming | 14082 | 426 | 5.2 | 21.4 | 13.1 | 98.1 | 0.0 | 0.2 | 0.9 | 0.7 | 1.6 | 2.88 | 94.0 | 24.5 | 1.7 | 64.2 | 8.3 |
| Wyoming | 14113 | 703 | 4.6 | 23.8 | 12.9 | 98.2 | 0.0 | 0.4 | 0.3 | 0.1 | 1.4 | 3.13 | 92.4 | 17.0 | 7.5 | 76.4 | 10.3 |
| Wyoming | 14145 | 1618 | 4.6 | 21.8 | 14.4 | 98.4 | 0.1 | 0.3 | 0.1 | 0.3 | 2.1 | 2.95 | 91.7 | 10.7 | 2.2 | 64.7 | 3.5 |
| Wyoming | 14167 | 1663 | 4.8 | 19.8 | 14.1 | 98.0 | 0.1 | 0.1 | 0.2 | 1.1 | 2.5 | 2.86 | 90.1 | 14.5 | 5.4 | 65.7 | 10.4 |
| Wyoming | 14427 | 1964 | 5.4 | 22.4 | 14.7 | 97.9 | 0.3 | 0.3 | 0.4 | 0.0 | 1.5 | 2.89 | 92.1 | 16.9 | 1.8 | 67.1 | 12.5 |
| Wyoming | 14530 | 5575 | 5.8 | 22.9 | 15.3 | 96.5 | 0.6 | 0.3 | 0.3 | 1.2 | 3.2 | 2.91 | 86.3 | 14.9 | 4.3 | 63.8 | 16.4 |
| Wyoming | 14536 | 687 | 6.4 | 25.2 | 15.3 | 97.2 | 0.3 | 0.1 | 0.9 | 0.1 | 0.9 | 2.91 | 84.7 | 9.2 | 8.2 | 61.4 | 10.8 |
| Wyoming | 14550 | 1537 | 5.5 | 21.1 | 17.2 | 96.9 | 0.2 | 0.3 | 0.3 | 0.8 | 1.7 | 2.92 | 88.5 | 15.1 | 3.8 | 68.6 | 8.1 |
| Wyoming | 14569 | 6211 | 5.4 | 22.4 | 16.1 | 97.2 | 0.2 | 0.3 | 0.8 | 0.3 | 1.5 | 2.94 | 83.1 | 13.1 | 3.0 | 60.9 | 15.5 |
| Wyoming | 14591 | 1748 | 4.7 | 22.8 | 14.5 | 96.3 | 0.5 | 0.3 | 0.3 | 1.1 | 2.5 | 2.97 | 90.2 | 17.3 | 5.3 | 68.0 | 9.1 |
| Wyoming | Average | 2786.53 | 5.15 | 22.08 | 14.25 | 95.97 | 1.83 | 0.29 | 0.39 | 0.65 | 1.96 | 2.96 | 88.76 | 15.75 | 4.09 | 63.63 | 9.45 |

Appendix B

Perinatal Data by Zip Code

| County | Zip Code | Total Births | Premature Births (%) | Low Birth Weight (%) | Late or No Prenatal Care (%) | Infant Death Rate per 1000 Live Births | Teen Birth Rate per 1000 Females (Ages 15-19) | Teen Pregnancy Rate per 1000 Females (Ages 15-19) |
|-----------------|----------------|--------------|----------------------|----------------------|------------------------------|--|---|---|
| Allegany | 14060 | 15 | 26.7 | 20.0 | 14.3 | 0.0 | * | * |
| Allegany | 14709 | 66 | 14.8 | 3.0 | 28.6 | 0.0 | 23.4 | 23.4 |
| Allegany | 14711 | 73 | 12.7 | 6.8 | 25.0 | 13.7 | 33.8 | 43.5 |
| Allegany | 14714 | 13 | 0.0 | 0.0 | 7.7 | 0.0 | * | * |
| Allegany | 14715 | 114 | 12.3 | 8.8 | 1.8 | 8.8 | 14.7 | 19.6 |
| Allegany | 14721 | 10 | 22.2 | 30.0 | 10.0 | 0.0 | * | * |
| Allegany | 14727 | 162 | 12.0 | 9.3 | 4.4 | 6.2 | 22.3 | 27.5 |
| Allegany | 14735 | 124 | 8.5 | 4.8 | 22.2 | 8.1 | 21.0 | 27.0 |
| Allegany | 14739 | 97 | 12.5 | 8.2 | 9.3 | 10.3 | 39.4 | 45.5 |
| Allegany | 14744 | 50 | 6.4 | 8.0 | 4.2 | 0.0 | 4.1 | 6.8 |
| Allegany | 14754 | 17 | 17.6 | 17.6 | 0.0 | 58.8 | 32.5 | 32.5 |
| Allegany | 14770 | 90 | 11.2 | 7.8 | 4.5 | 0.0 | 23.1 | 26.4 |
| Allegany | 14777 | 20 | 5.0 | 0.0 | 0.0 | 0.0 | * | * |
| Allegany | 14802 | 22 | 4.8 | 4.5 | 4.5 | 0.0 | 0.0 | 3.3 |
| Allegany | 14803 | 43 | 9.3 | 4.7 | 7.3 | 0.0 | 4.6 | 6.8 |
| Allegany | 14804 | 38 | 2.6 | 0.0 | 2.6 | 0.0 | 24.5 | 29.4 |
| Allegany | 14806 | 71 | 7.5 | 8.5 | 0.0 | 0.0 | 14.5 | 29.0 |
| Allegany | 14813 | 71 | 13.0 | 7.0 | 4.3 | 0.0 | 20.7 | 28.4 |
| Allegany | 14822 | 34 | 12.5 | 5.9 | 0.0 | 0.0 | 7.2 | 43.5 |
| Allegany | 14880 | 44 | 9.5 | 4.5 | 4.5 | 0.0 | 19.3 | 29.0 |
| Allegany | 14895 | 296 | 10.1 | 8.8 | 3.4 | 10.1 | 29.5 | 38.1 |
| Allegany | 14897 | 44 | 16.7 | 13.6 | 11.4 | 0.0 | 47.6 | 66.7 |
| Allegany | Average | 68.8 | 11.3 | 8.3 | 7.7 | 5.3 | 21.2 | 29.2 |
| Cattaraugus | 14042 | 174 | 10.1 | 8.0 | 4.8 | 0.0 | 26.1 | 32.1 |
| Cattaraugus | 14065 | 86 | 8.6 | 4.7 | 12.8 | 0.0 | 19.0 | 19.0 |
| Cattaraugus | 14070 | 140 | 9.4 | 7.1 | 3.8 | 0.0 | 26.8 | 47.0 |
| Cattaraugus | 14101 | 60 | 15.0 | 13.3 | 1.8 | 33.3 | 16.9 | 16.9 |
| Cattaraugus | 14129 | 59 | 8.5 | 3.4 | 3.6 | 0.0 | 61.4 | 61.4 |
| Cattaraugus | 14138 | 87 | 10.0 | 8.0 | 20.3 | 0.0 | 21.1 | 38.6 |
| Cattaraugus | 14171 | 46 | 8.9 | 10.9 | 2.2 | 0.0 | 29.9 | 39.8 |
| Cattaraugus | 14706 | 152 | 11.9 | 11.8 | 3.3 | 6.6 | 8.1 | 11.1 |
| Cattaraugus | 14719 | 117 | 17.3 | 5.1 | 15.0 | 0.0 | 21.6 | 26.4 |
| Cattaraugus | 14726 | 164 | 21.2 | 3.7 | 30.3 | 0.0 | 11.5 | 20.1 |
| Cattaraugus | 14729 | 32 | 11.1 | 9.4 | 11.5 | 0.0 | 32.3 | 43.0 |
| Cattaraugus | 14731 | 22 | 0.0 | 0.0 | 4.5 | 0.0 | 23.8 | 31.7 |
| Cattaraugus | 14737 | 125 | 9.8 | 5.6 | 6.6 | 8.0 | 16.3 | 26.4 |
| Cattaraugus | 14738 | 107 | 16.5 | 15.0 | 4.0 | 37.4 | 16.4 | 19.1 |

Perinatal Data by Zip Code

| County | Zip Code | Total Births | Premature Births (%) | Low Birth Weight (%) | Late or No Prenatal Care (%) | Infant Death Rate per 1000 Live Births | Teen Birth Rate per 1000 Females (Ages 15-19) | Teen Pregnancy Rate per 1000 Females (Ages 15-19) |
|--------------------|----------------|--------------|----------------------|----------------------|------------------------------|--|---|---|
| Cattaraugus | 14741 | 49 | 10.6 | 6.1 | 10.4 | 0.0 | 42.4 | 48.5 |
| Cattaraugus | 14743 | 50 | 20.8 | 8.0 | 0.0 | 40.0 | 30.8 | 35.9 |
| Cattaraugus | 14748 | 38 | 14.3 | 2.6 | 5.4 | 0.0 | * | * |
| Cattaraugus | 14753 | 23 | 0.0 | 8.7 | 0.0 | 0.0 | 0.0 | 0.0 |
| Cattaraugus | 14755 | 90 | 12.8 | 7.8 | 3.9 | 11.1 | 37.0 | 49.4 |
| Cattaraugus | 14760 | 650 | 12.7 | 6.0 | 3.9 | 12.3 | 36.0 | 49.0 |
| Cattaraugus | 14772 | 195 | 22.0 | 9.7 | 4.8 | 5.1 | 19.6 | 32.7 |
| Cattaraugus | 14779 | 327 | 11.2 | 9.2 | 6.5 | 12.2 | 59.0 | 73.1 |
| Cattaraugus | Average | 127.0 | 11.9 | 7.5 | 7.2 | 7.5 | 26.5 | 34.3 |
| Chautauqua | 14048 | 576 | 15.8 | 11.3 | 7.1 | 12.2 | 56.4 | 72.1 |
| Chautauqua | 14062 | 77 | 13.5 | 7.8 | 7.8 | 0.0 | 14.6 | 29.2 |
| Chautauqua | 14063 | 255 | 15.8 | 9.4 | 3.6 | 0.0 | 4.9 | 9.6 |
| Chautauqua | 14136 | 169 | 13.0 | 8.9 | 4.3 | 11.8 | 13.6 | 17.4 |
| Chautauqua | 14701 | 1,541 | 12.3 | 7.5 | 5.0 | 9.7 | 42.2 | 50.9 |
| Chautauqua | 14710 | 108 | 9.3 | 4.6 | 12.0 | 0.0 | 22.2 | 37.0 |
| Chautauqua | 14712 | 60 | 10.0 | 6.7 | 1.7 | 0.0 | 13.1 | 13.1 |
| Chautauqua | 14716 | 66 | 6.1 | 3.0 | 4.7 | 0.0 | 28.4 | 46.1 |
| Chautauqua | 14718 | 50 | 10.2 | 4.0 | 0.0 | 0.0 | 17.5 | 21.1 |
| Chautauqua | 14723 | 32 | 0.0 | 0.0 | 14.3 | 0.0 | 21.9 | 27.3 |
| Chautauqua | 14724 | 116 | 10.8 | 8.6 | 14.3 | 0.0 | 8.5 | 11.4 |
| Chautauqua | 14728 | 41 | 20.0 | 9.8 | 6.1 | 0.0 | 9.0 | 27.0 |
| Chautauqua | 14733 | 118 | 5.5 | 3.4 | 3.6 | 8.5 | 37.3 | 56.0 |
| Chautauqua | 14736 | 11 | 11.1 | 0.0 | 9.1 | 0.0 | * | * |
| Chautauqua | 14740 | 31 | 4.3 | 3.2 | 0.0 | 0.0 | 13.1 | 19.6 |
| Chautauqua | 14747 | 63 | 13.6 | 3.2 | 6.9 | 0.0 | 14.3 | 28.7 |
| Chautauqua | 14750 | 95 | 11.7 | 5.3 | 2.1 | 0.0 | 13.6 | 18.1 |
| Chautauqua | 14757 | 86 | 7.6 | 4.7 | 17.5 | 0.0 | 8.5 | 14.2 |
| Chautauqua | 14767 | 98 | 12.1 | 2.0 | 20.7 | 10.2 | 18.7 | 22.5 |
| Chautauqua | 14769 | 17 | 23.5 | 23.5 | 0.0 | 0.0 | 17.5 | 26.3 |
| Chautauqua | 14775 | 66 | 10.8 | 4.5 | 6.2 | 0.0 | 35.1 | 35.1 |
| Chautauqua | 14781 | 77 | 5.3 | 5.2 | 12.0 | 0.0 | 39.7 | 47.6 |
| Chautauqua | 14782 | 74 | 16.2 | 16.2 | 5.5 | 0.0 | 13.5 | 26.9 |
| Chautauqua | 14784 | 38 | 12.9 | 10.5 | 3.0 | 0.0 | 0.0 | 6.7 |
| Chautauqua | 14787 | 134 | 11.8 | 3.0 | 5.4 | 14.9 | 21.4 | 32.1 |
| Chautauqua | Average | 160.0 | 11.3 | 6.7 | 6.9 | 2.7 | 20.2 | 29.0 |
| Erie | 14001 | 240 | 11.1 | 7.9 | 2.7 | 0.0 | 10.2 | 13.6 |
| Erie | 14004 | 254 | 10.7 | 9.4 | 4.1 | 15.7 | 10.7 | 15.5 |

Perinatal Data by Zip Code

| County | Zip Code | Total Births | Premature Births (%) | Low Birth Weight (%) | Late or No Prenatal Care (%) | Infant Death Rate per 1000 Live Births | Teen Birth Rate per 1000 Females (Ages 15-19) | Teen Pregnancy Rate per 1000 Females (Ages 15-19) |
|--------|----------|--------------|----------------------|----------------------|------------------------------|--|---|---|
| Erie | 14006 | 252 | 13.0 | 10.7 | 5.3 | 0.0 | 14.5 | 27.0 |
| Erie | 14025 | 88 | 9.3 | 6.8 | 1.1 | 11.4 | 8.8 | 14.6 |
| Erie | 14026 | 24 | 4.2 | 0.0 | 0.0 | 0.0 | * | * |
| Erie | 14030 | 48 | 10.4 | 8.3 | 0.0 | 0.0 | 11.7 | 11.7 |
| Erie | 14031 | 165 | 6.8 | 5.5 | 2.5 | 0.0 | 2.0 | 4.0 |
| Erie | 14032 | 181 | 7.3 | 4.4 | 2.9 | 0.0 | 0.0 | 4.1 |
| Erie | 14033 | 50 | 2.0 | 4.0 | 0.0 | 0.0 | 0.0 | 0.0 |
| Erie | 14034 | 67 | 13.8 | 7.5 | 1.6 | 0.0 | 40.4 | 55.6 |
| Erie | 14043 | 660 | 12.5 | 7.3 | 2.9 | 6.1 | 8.6 | 14.2 |
| Erie | 14047 | 148 | 11.0 | 5.4 | 2.1 | 6.8 | 7.4 | 10.3 |
| Erie | 14051 | 400 | 9.2 | 6.8 | 1.6 | 2.5 | 2.4 | 6.3 |
| Erie | 14052 | 374 | 6.2 | 3.7 | 2.0 | 10.7 | 2.2 | 7.0 |
| Erie | 14055 | 30 | 7.1 | 0.0 | 3.6 | 0.0 | 18.5 | 18.5 |
| Erie | 14057 | 183 | 6.1 | 4.4 | 4.0 | 0.0 | 4.4 | 8.8 |
| Erie | 14059 | 176 | 4.6 | 2.8 | 1.8 | 0.0 | 2.2 | 6.6 |
| Erie | 14068 | 150 | 6.1 | 8.7 | 2.1 | 13.3 | 2.3 | 9.2 |
| Erie | 14069 | 19 | 5.6 | 0.0 | 0.0 | 0.0 | * | * |
| Erie | 14072 | 501 | 12.7 | 6.0 | 3.7 | 2.0 | 6.1 | 14.0 |
| Erie | 14075 | 1,103 | 10.2 | 7.4 | 2.9 | 4.5 | 7.1 | 14.0 |
| Erie | 14080 | 112 | 10.8 | 3.6 | 0.9 | 8.9 | 8.8 | 8.8 |
| Erie | 14081 | 110 | 15.9 | 7.3 | 8.4 | 9.1 | 10.3 | 28.2 |
| Erie | 14085 | 258 | 6.3 | 7.8 | 1.2 | 7.8 | 5.4 | 7.6 |
| Erie | 14086 | 899 | 8.2 | 5.8 | 2.4 | 2.2 | 5.1 | 13.3 |
| Erie | 14091 | 50 | 16.0 | 0.0 | 0.0 | 0.0 | 38.8 | 62.0 |
| Erie | 14102 | 19 | 15.8 | 10.5 | 0.0 | 0.0 | 0.0 | 7.1 |
| Erie | 14111 | 126 | 13.6 | 7.9 | 0.8 | 0.0 | 19.6 | 19.6 |
| Erie | 14127 | 664 | 10.6 | 7.2 | 1.1 | 3.0 | 1.3 | 5.5 |
| Erie | 14139 | 67 | 11.3 | 6.0 | 0.0 | 0.0 | 3.7 | 7.5 |
| Erie | 14141 | 212 | 10.2 | 10.4 | 4.1 | 0.0 | 21.9 | 28.0 |
| Erie | 14150 | 1,252 | 10.7 | 7.5 | 3.7 | 6.4 | 16.0 | 27.7 |
| Erie | 14170 | 47 | 0.0 | 2.1 | 0.0 | 0.0 | 8.3 | 16.7 |
| Erie | 14201 | 562 | 17.1 | 10.9 | 5.0 | 8.9 | 69.6 | 99.2 |
| Erie | 14202 | 121 | 7.8 | 4.1 | 5.3 | 0.0 | 46.9 | 56.3 |
| Erie | 14203 | 52 | 15.9 | 9.6 | 2.3 | 0.0 | 21.7 | 79.7 |
| Erie | 14204 | 390 | 15.8 | 12.1 | 8.7 | 12.8 | 64.1 | 113.6 |
| Erie | 14206 | 826 | 13.4 | 10.9 | 6.8 | 8.5 | 38.4 | 59.4 |
| Erie | 14207 | 1,302 | 12.2 | 8.1 | 6.0 | 13.1 | 63.5 | 94.5 |

Perinatal Data by Zip Code

| County | Zip Code | Total Births | Premature Births (%) | Low Birth Weight (%) | Late or No Prenatal Care (%) | Infant Death Rate per 1000 Live Births | Teen Birth Rate per 1000 Females (Ages 15-19) | Teen Pregnancy Rate per 1000 Females (Ages 15-19) |
|----------------|----------------|--------------|----------------------|----------------------|------------------------------|--|---|---|
| Erie | 14208 | 371 | 16.2 | 15.1 | 6.0 | 5.4 | 36.5 | 69.3 |
| Erie | 14209 | 245 | 10.7 | 10.2 | 4.5 | 4.1 | 43.5 | 92.2 |
| Erie | 14210 | 622 | 15.0 | 11.3 | 5.7 | 9.6 | 32.8 | 55.7 |
| Erie | 14211 | 1,143 | 16.6 | 14.0 | 7.8 | 20.1 | 73.3 | 127.6 |
| Erie | 14212 | 540 | 16.1 | 12.0 | 7.0 | 7.4 | 60.8 | 99.6 |
| Erie | 14213 | 1,459 | 15.3 | 9.6 | 6.9 | 13.0 | 61.6 | 84.5 |
| Erie | 14214 | 613 | 16.0 | 12.6 | 4.7 | 3.3 | 19.8 | 41.4 |
| Erie | 14215 | 1,776 | 15.0 | 11.6 | 8.9 | 16.3 | 66.0 | 126.3 |
| Erie | 14216 | 829 | 13.2 | 10.6 | 5.6 | 6.0 | 18.5 | 29.9 |
| Erie | 14217 | 774 | 9.8 | 6.1 | 3.7 | 3.9 | 9.5 | 23.7 |
| Erie | 14218 | 842 | 12.3 | 9.9 | 9.5 | 8.3 | 36.5 | 58.4 |
| Erie | 14219 | 340 | 11.3 | 6.5 | 4.5 | 2.9 | 17.0 | 28.4 |
| Erie | 14220 | 999 | 11.2 | 7.1 | 4.5 | 11.0 | 24.3 | 46.2 |
| Erie | 14221 | 1,223 | 7.5 | 5.1 | 3.4 | 3.3 | 3.7 | 8.3 |
| Erie | 14222 | 274 | 9.5 | 5.8 | 4.4 | 10.9 | 5.7 | 32.8 |
| Erie | 14223 | 738 | 11.3 | 8.0 | 2.8 | 5.4 | 11.3 | 24.8 |
| Erie | 14224 | 1,022 | 10.3 | 5.8 | 2.4 | 6.8 | 8.5 | 17.0 |
| Erie | 14225 | 1,162 | 13.3 | 8.9 | 4.8 | 8.6 | 25.7 | 47.9 |
| Erie | 14226 | 1,013 | 9.8 | 7.2 | 5.1 | 3.0 | 7.4 | 16.6 |
| Erie | 14227 | 663 | 12.0 | 7.2 | 3.9 | 10.6 | 10.2 | 18.3 |
| Erie | 14228 | 652 | 9.5 | 6.1 | 7.1 | 7.7 | 4.3 | 12.2 |
| Erie | Average | 491.4 | 10.9 | 7.3 | 3.6 | 5.4 | 20.3 | 35.4 |
| Genesee | 14005 | 52 | 0.0 | 5.8 | 0.0 | 0.0 | 0.0 | 8.4 |
| Genesee | 14013 | 70 | 13.2 | 7.1 | 8.8 | 28.6 | 19.6 | 24.5 |
| Genesee | 14020 | 731 | 9.1 | 5.7 | 3.6 | 8.2 | 27.7 | 39.3 |
| Genesee | 14036 | 121 | 10.1 | 3.3 | 5.0 | 0.0 | 4.8 | 12.7 |
| Genesee | 14040 | 46 | 13.6 | 8.7 | 2.2 | 0.0 | 17.1 | 25.6 |
| Genesee | 14054 | 56 | 3.6 | 0.0 | 0.0 | 0.0 | 0.0 | 6.3 |
| Genesee | 14058 | 62 | 6.8 | 4.8 | 4.8 | 16.1 | 8.1 | 32.5 |
| Genesee | 14125 | 123 | 14.5 | 12.2 | 4.2 | 24.4 | 13.2 | 19.9 |
| Genesee | 14143 | 33 | 6.1 | 3.0 | 3.4 | 0.0 | 0.0 | 0.0 |
| Genesee | 14416 | 86 | 13.4 | 4.7 | 2.5 | 0.0 | 8.7 | 15.2 |
| Genesee | 14422 | 71 | 9.9 | 7.0 | 4.2 | 0.0 | 12.7 | 22.2 |
| Genesee | 14482 | 266 | 7.4 | 4.1 | 1.2 | 0.0 | 19.3 | 26.8 |
| Genesee | 14525 | 89 | 9.2 | 3.4 | 1.1 | 0.0 | 26.5 | 29.5 |
| Genesee | Average | 138.9 | 9.0 | 5.4 | 3.2 | 5.9 | 12.1 | 20.2 |
| Niagara | 14008 | 30 | 0.0 | 0.0 | 0.0 | 0.0 | 4.9 | 4.9 |

Perinatal Data by Zip Code

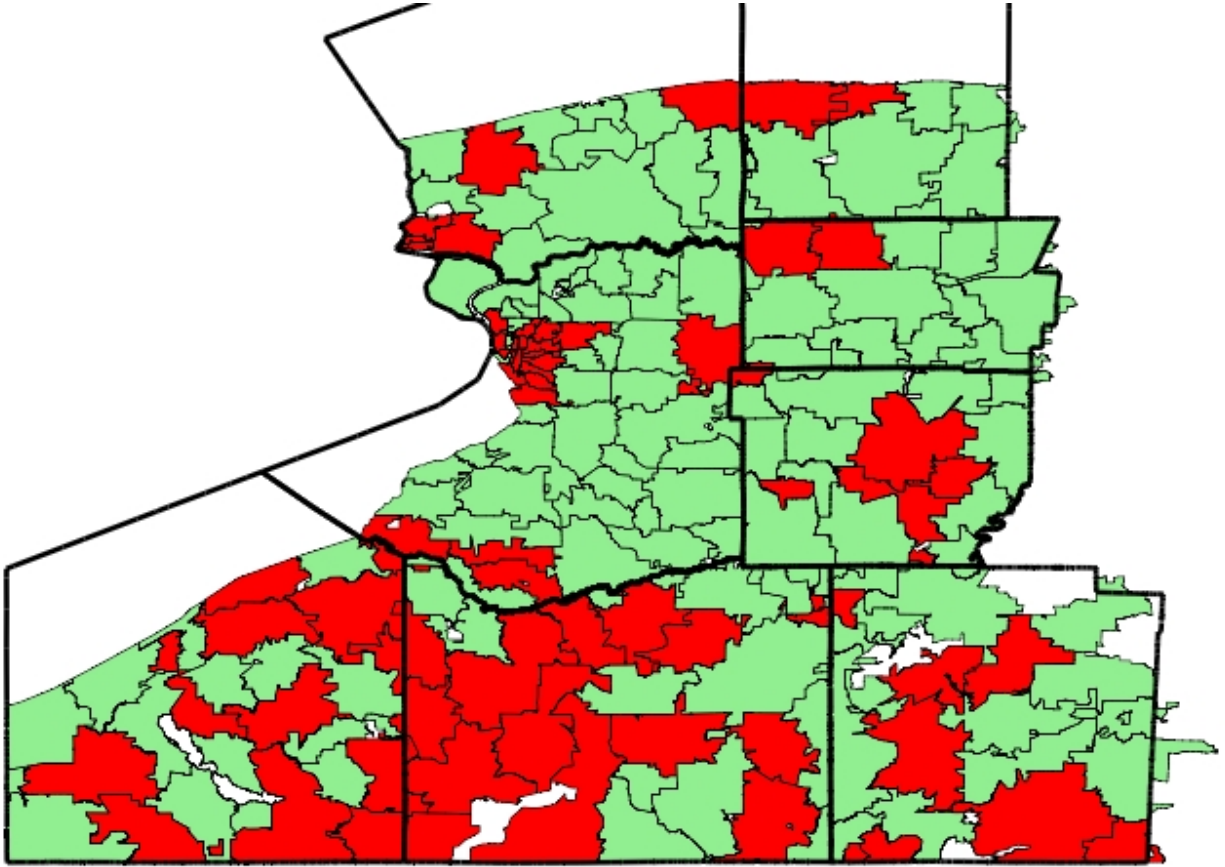
| County | Zip Code | Total Births | Premature Births (%) | Low Birth Weight (%) | Late or No Prenatal Care (%) | Infant Death Rate per 1000 Live Births | Teen Birth Rate per 1000 Females (Ages 15-19) | Teen Pregnancy Rate per 1000 Females (Ages 15-19) |
|----------------|----------------|--------------|----------------------|----------------------|------------------------------|--|---|---|
| Niagara | 14012 | 61 | 13.1 | 9.8 | 10.0 | 0.0 | 19.2 | 23.0 |
| Niagara | 14028 | 58 | 8.8 | 12.1 | 1.8 | 0.0 | 13.7 | 13.7 |
| Niagara | 14067 | 113 | 7.1 | 5.3 | 2.7 | 0.0 | 11.2 | 29.8 |
| Niagara | 14092 | 220 | 9.2 | 7.3 | 2.8 | 4.5 | 5.2 | 9.6 |
| Niagara | 14094 | 1,674 | 12.6 | 7.9 | 3.5 | 5.4 | 23.4 | 34.5 |
| Niagara | 14105 | 126 | 12.8 | 4.0 | 4.0 | 0.0 | 15.5 | 26.5 |
| Niagara | 14108 | 122 | 8.2 | 7.4 | 4.1 | 8.2 | 12.5 | 15.6 |
| Niagara | 14120 | 1,251 | 11.5 | 8.8 | 4.2 | 1.6 | 13.1 | 19.3 |
| Niagara | 14131 | 133 | 17.7 | 12.8 | 4.7 | 0.0 | 22.1 | 36.8 |
| Niagara | 14132 | 142 | 12.5 | 6.3 | 3.6 | 14.1 | 17.6 | 27.2 |
| Niagara | 14172 | 69 | 17.6 | 7.2 | 0.0 | 0.0 | 14.7 | 29.5 |
| Niagara | 14174 | 104 | 11.8 | 4.8 | 6.1 | 9.6 | 7.4 | 20.3 |
| Niagara | 14301 | 586 | 18.5 | 11.1 | 8.3 | 6.8 | 68.9 | 93.9 |
| Niagara | 14303 | 249 | 16.0 | 9.6 | 10.2 | 8.0 | 42.1 | 91.6 |
| Niagara | 14304 | 831 | 15.6 | 9.3 | 4.5 | 6.0 | 15.9 | 27.0 |
| Niagara | 14305 | 677 | 16.4 | 11.2 | 9.6 | 14.8 | 46.1 | 80.8 |
| Niagara | Average | 379.2 | 12.3 | 7.9 | 4.7 | 4.6 | 20.8 | 34.4 |
| Orleans | 14098 | 110 | 12.3 | 7.3 | 6.6 | 0.0 | 34.8 | 43.5 |
| Orleans | 14103 | 338 | 7.3 | 5.6 | 5.4 | 5.9 | 25.8 | 37.6 |
| Orleans | 14411 | 409 | 8.2 | 4.6 | 5.5 | 2.4 | 30.2 | 36.7 |
| Orleans | 14470 | 227 | 11.3 | 7.9 | 4.0 | 17.6 | 22.4 | 28.8 |
| Orleans | 14476 | 48 | 8.7 | 8.3 | 0.0 | 20.8 | 4.1 | 8.1 |
| Orleans | 14477 | 35 | 11.4 | 8.6 | 2.9 | 0.0 | 17.1 | 17.1 |
| Orleans | 14571 | 27 | 22.2 | 11.1 | 8.3 | 0.0 | 8.8 | 17.5 |
| Orleans | Average | 170.6 | 11.6 | 7.6 | 4.7 | 6.7 | 20.5 | 27.0 |
| Wyoming | 14009 | 179 | 11.6 | 5.0 | 4.7 | 0.0 | 18.3 | 27.4 |
| Wyoming | 14011 | 168 | 9.6 | 4.2 | 3.0 | 6.0 | 21.6 | 27.0 |
| Wyoming | 14024 | 58 | 1.9 | 1.7 | 9.3 | 0.0 | 12.5 | 25.0 |
| Wyoming | 14037 | 26 | 8.3 | 0.0 | 3.8 | 0.0 | 0.0 | 0.0 |
| Wyoming | 14066 | 41 | 5.0 | 2.4 | 7.3 | 24.4 | 15.6 | 15.6 |
| Wyoming | 14082 | 18 | 5.6 | 11.1 | 5.6 | 55.6 | * | * |
| Wyoming | 14113 | 24 | 8.3 | 4.2 | 0.0 | 41.7 | * | * |
| Wyoming | 14145 | 32 | 3.1 | 6.3 | 0.0 | 0.0 | 0.0 | 0.0 |
| Wyoming | 14167 | 40 | 2.5 | 0.0 | 5.3 | 25.0 | 5.8 | 5.8 |
| Wyoming | 14427 | 71 | 10.0 | 5.6 | 1.4 | 0.0 | 19.0 | 19.0 |
| Wyoming | 14530 | 178 | 11.0 | 8.4 | 2.8 | 0.0 | 18.8 | 27.4 |
| Wyoming | 14536 | 32 | 0.0 | 3.1 | 3.1 | 0.0 | * | * |

Perinatal Data by Zip Code

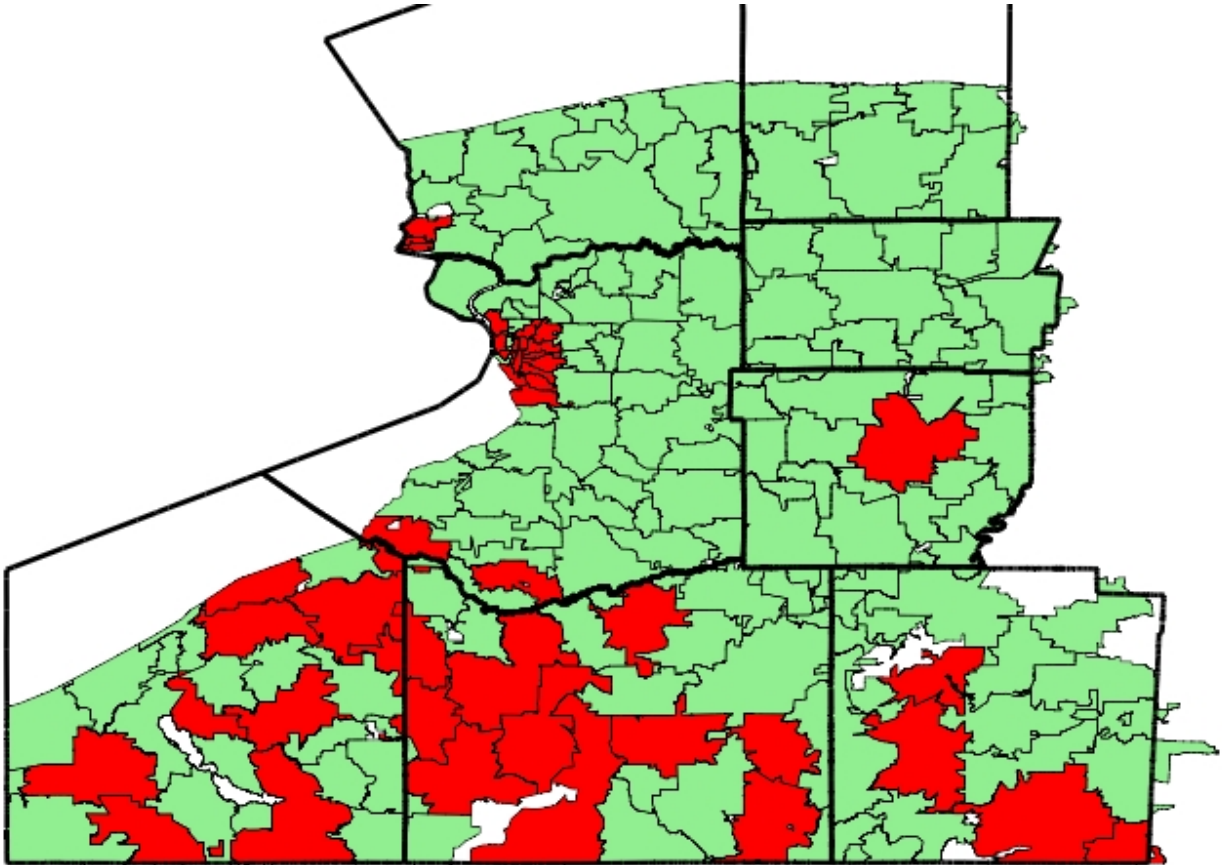
| County | Zip Code | Total Births | Premature Births (%) | Low Birth Weight (%) | Late or No Prenatal Care (%) | Infant Death Rate per 1000 Live Births | Teen Birth Rate per 1000 Females (Ages 15-19) | Teen Pregnancy Rate per 1000 Females (Ages 15-19) |
|----------------|----------------|--------------|----------------------|----------------------|------------------------------|--|---|---|
| Wyoming | 14550 | 63 | 16.4 | 14.3 | 3.2 | 0.0 | 30.9 | 30.9 |
| Wyoming | 14569 | 173 | 12.0 | 10.4 | 1.7 | 17.3 | 11.3 | 17.7 |
| Wyoming | 14591 | 39 | 5.4 | 2.6 | 5.4 | 0.0 | 9.8 | 14.7 |
| Wyoming | Average | 76.1 | 7.4 | 5.3 | 3.8 | 11.3 | 13.6 | 17.5 |

Appendix C

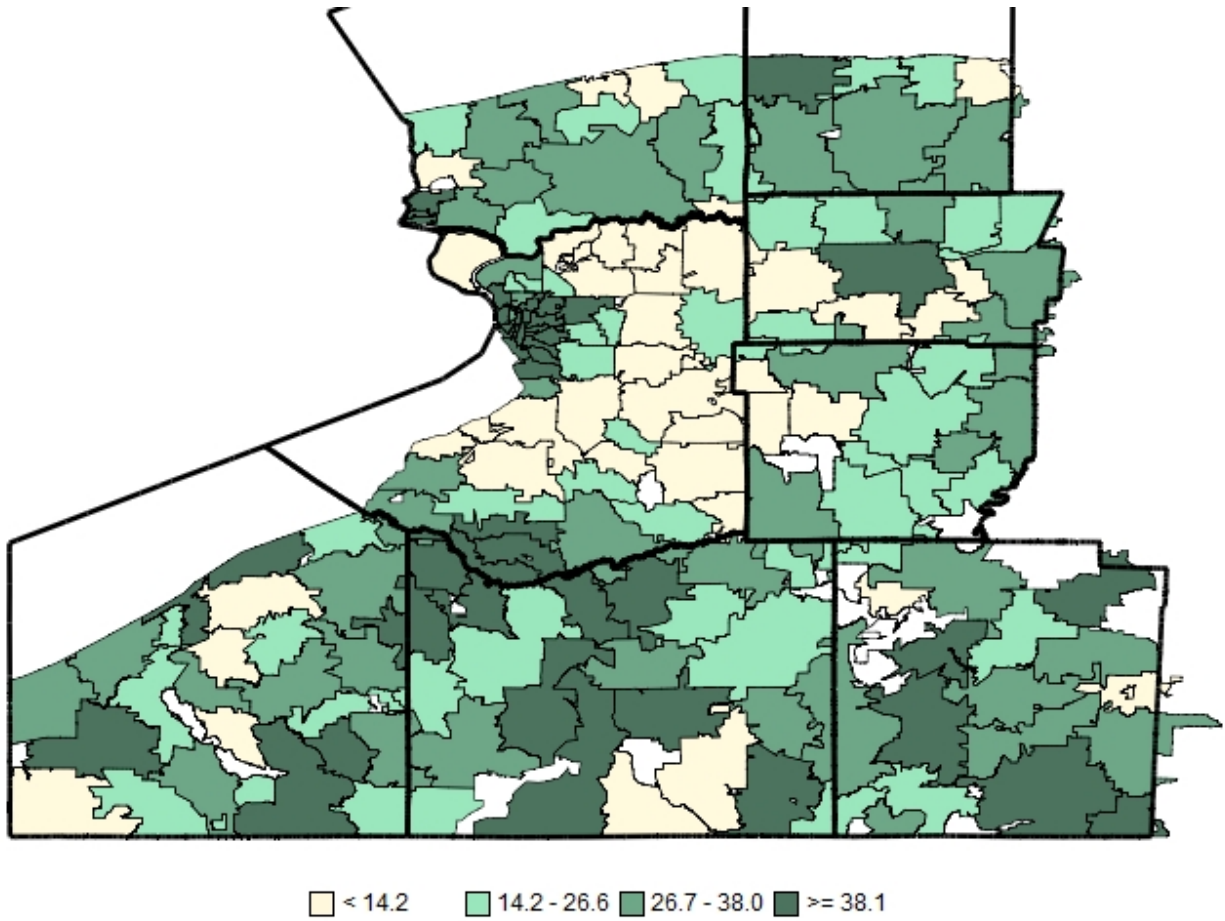
High Risk Zip Codes in WNY



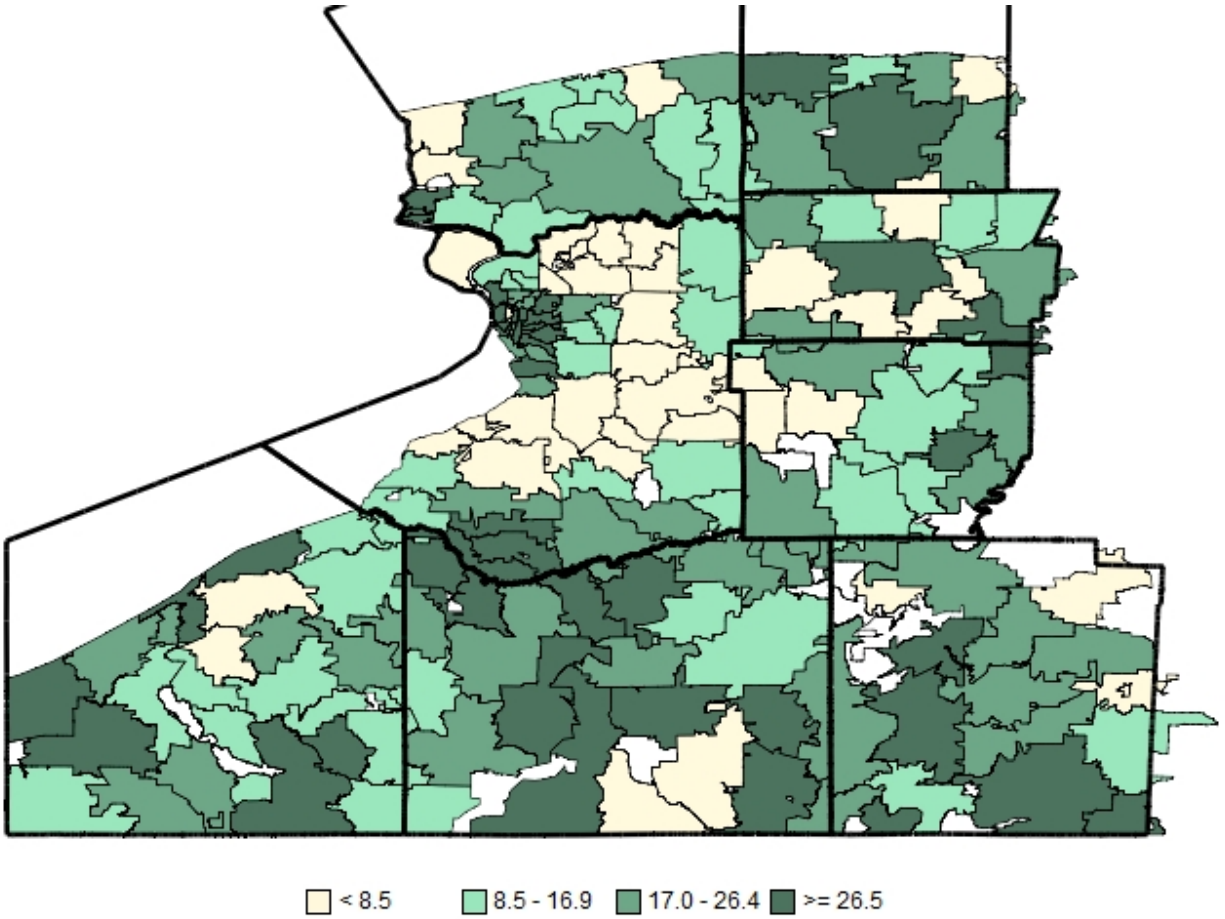
High Risk, High Poverty Zip Codes in WNY



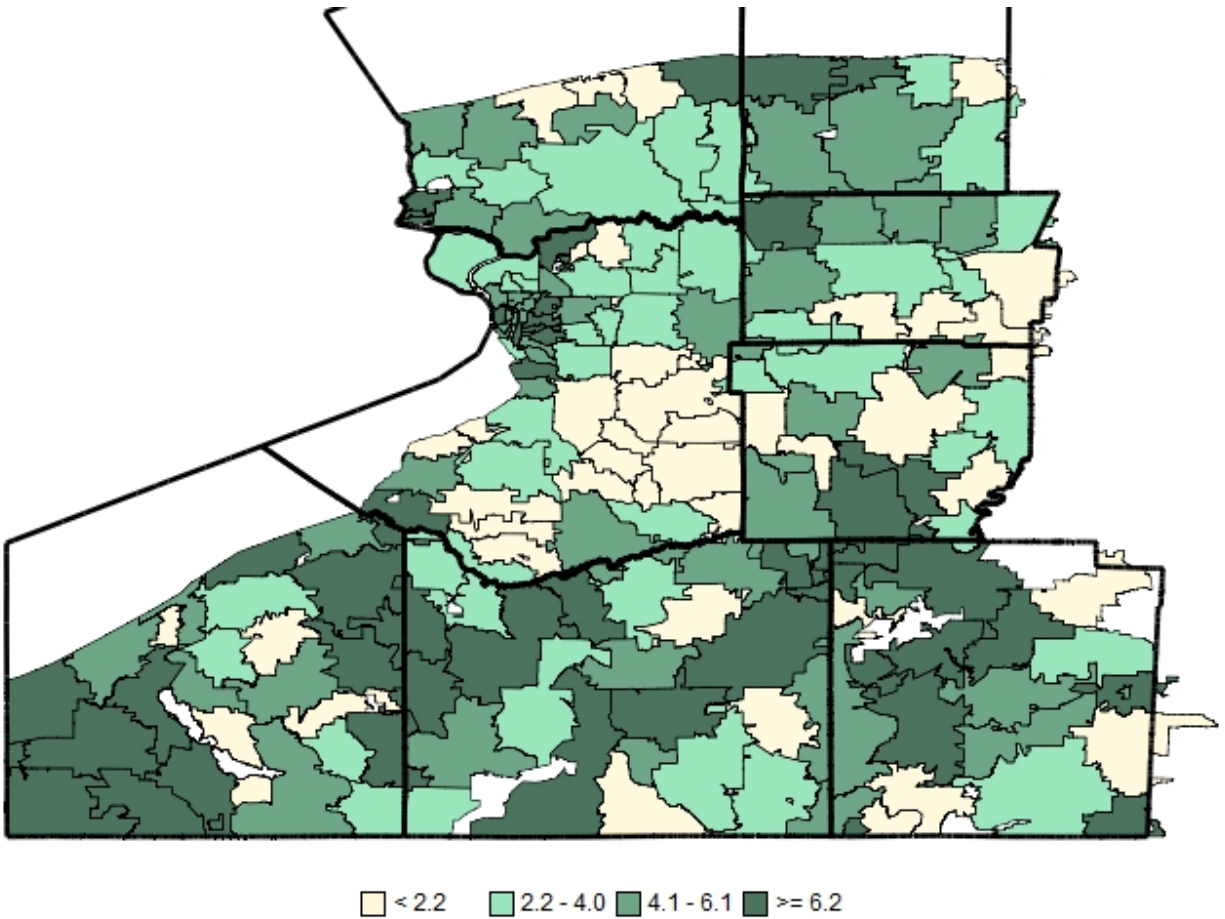
Teen Pregnancy Rates Per 1000 Population by Zip Code in WNY



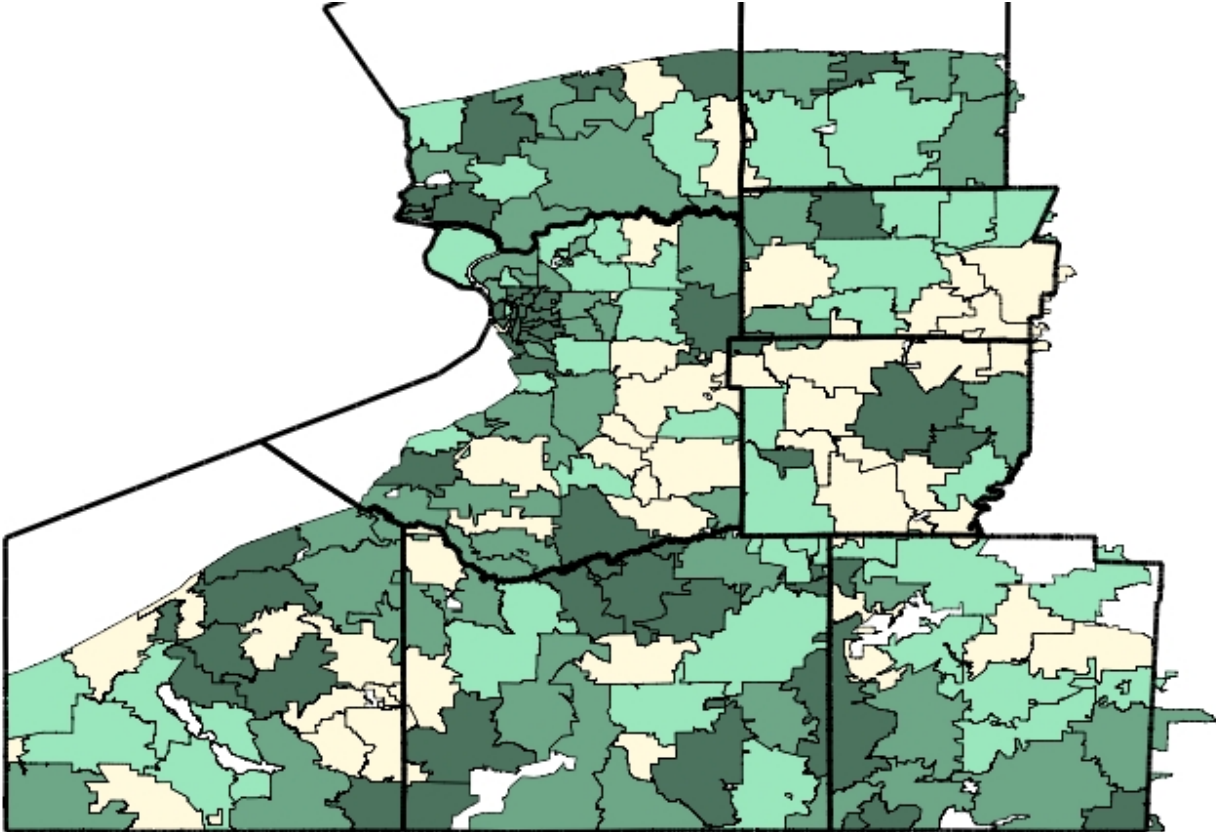
Teen Birth Rates Per 1000 Population by Zip Code in WNY



Percent Late or No Entry Into Prenatal Care by Zip Code in WNY

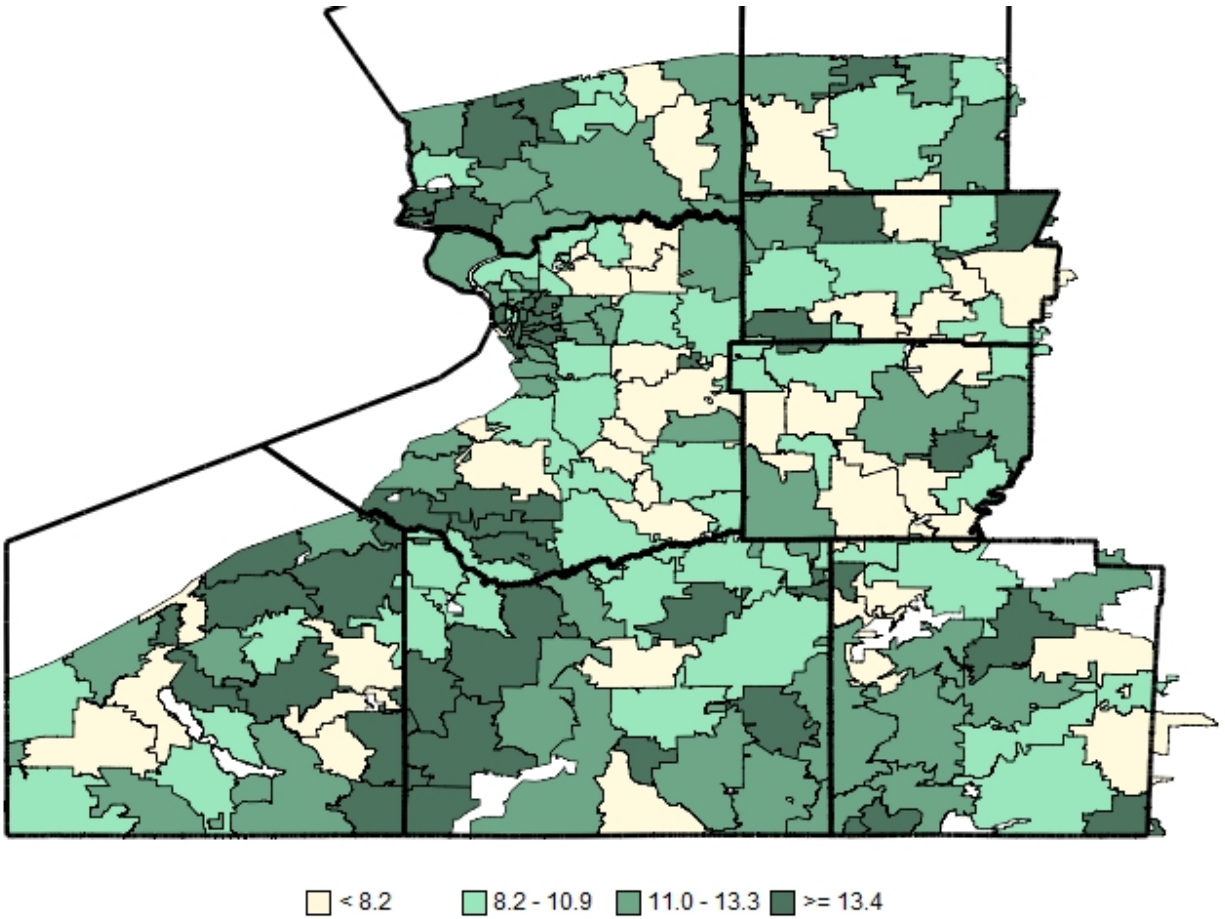


Percent Low Birth Weight by Zip Code in WNY



< 4.5 4.5 - 7.0 7.1 - 9.2 >= 9.3

Percent Premature Birth by Zip Code in WNY



Infant Death Rates Per 1000 Live Births by Zip Code in WNY

