



COMMUNITY PARTNERS OF WNY
Performing Provider System

Community Briefing

Dr. Michael Edbauer, Chief Medical Officer, Catholic Health System
Amy White-Storfer, Director Community Partners of WNY

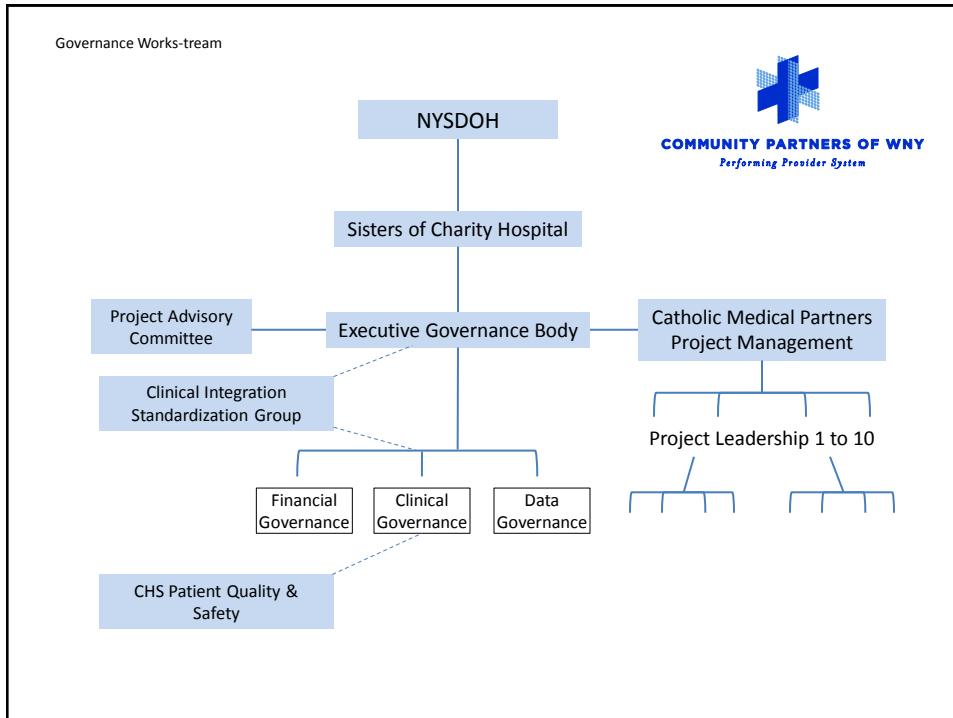
12/02/2015

Topics

1. Governance overview
2. Budget
3. Contracts/Agreements
4. Project and Related Updates



COMMUNITY PARTNERS OF WNY
Performing Provider System



Governance & Community Engagement

- Cross-section of primary stakeholder organizations
- Medical community
- Community based organizations
- PAC spans approximately 60 organizations



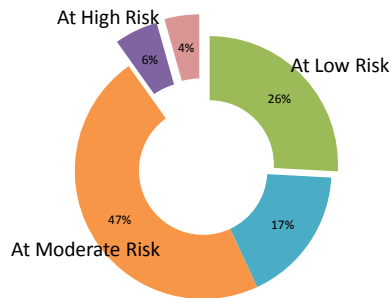
CPWNY DSRIP Project Plan Award

Agreement Period: April 1, 2015 – December 31, 2020

Award Amount: \$92,253,402

Population: 85,385

Low Risk:	\$23,856,680	25.86%
Moderate Risk:	\$59,298,605	64.28%
Higher Risk:	\$9,098,118	9.86%



- Safety Net Equity Infrastructure (previously Safety Net Equity Guarantee)
- Safety Net Equity Performance
- Net Project Valuation
- Net High Performance Fund (3%)
- Additional Performance Fund (State Only)



Finance/Funds Flow:

- New agreements must be established with Managed Care Organizations for Safety Net \$
- Working with Yourcare, Fidelis, IHA and HN
- Coordinating with Millennium CC
- 40% of funding now flows through MCOs



Establishing DSRIP Contracts with Physicians:

Current network physician contracts:

- 300 practice groups or approximately 900 physicians
- All executed taking advantage of established CMP agreements in place

2.a.i. Project & Provider Engagement Work-Stream

Establishing DSRIP Contracts with Physicians/Practices:

- Targeting 120 PCP and pediatric physicians (includes 8 targeted practices) in Chautauqua
- Roswell Physician Group: Medical group contract in progress
- WCA Hospital and Chautauqua County Health Network: contracts in progress for Domain 2, 3 and 4 *projects*
- Millennium Care Collaborative (Millennium) engaged regarding providers and practices that overlap.
- Target complete date for physician and physician groups is DY1Q4



COMMUNITY PARTNERS OF WNY
Performing Provider System

2.a.i. Project & Provider Engagement Work-Stream

Project-Based Contracts Progress Report

Contracts completed:

- Telemedicine Contracts: WCA Hospital (Chautauqua)
- Nurse Family Partnership: Chautauqua County Department of Health
- Palliative Care Project: Hospice Buffalo
- Workforce Survey: Rural-AHEC
- Technical Assessment: CHARTIS
- Medicaid Population Engagement: P2 Collaborative of Western NY



Project-Based Contracts Progress Report

Highlighted contracts in progress:

- Urban League and Catholic Charities: Community Outreach Contracts across several projects
- Smoking Cessation Project: Roswell Park (Corporation)
- ECCPASA, Mental Health Association: Mental Emotional behavioral health well being.
- Integration primary care with Behavioral Health: Physician network planning in progress.
- Training Enhancements: P2 Collaborative of Western NY
- Cultural Competency Training: Community Health Workers

Review: CPWNY Projects

System Transformation

- 2ai Integrated Delivery System *
- 2biii ED Care Triage *
- 2biv Care Transitions
- 2cii Telemedicine

Clinical Improvement

- 3ai Behavioral Health Integration *
- 3bi CVD Cardiovascular Disease *
- 3fi Maternal and Child Health *
- 3gi Palliative Care Integration

Population-wide Strategy Implementation- The NYS Prevention Agenda

- 4ai MEB (Mental, Emotional, Behavioral) Well-Being *
- 4bi Promote Tobacco Cessation

* Overlap with Millennium

Budget Support for Primary Care

Summary: Resources focused on clinical staff, Dieticians, Social Workers, Pharmacists, Clinical Transformation Team

In 2.a.i, Integrated Delivery System

- ✓ Percentage of Full Time clinical transformation team allocated to DSRIP
- ✓ Large hospital in Chautauqua and related key partners funded
- ✓ Leverage existing and future performance dashboards to help providers identify areas for improvement.
- ✓ Budget allocated to population health management tool (i.e. notify practices when patients hit the ER or are admitted to the hospital.)

In 2.b.iii, ED Triage Initiative:

- ✓ Items above as well as percentage of full time team allocated to DSRIP for hospital partners (i.e. social workers to assist with primary care linkages.)
- ✓ Sisters Hospital, South Buffalo Mercy, WCA Hospital in first wave project work

In 2.b. iv., Care Transitions:

- ✓ Items above as well as new Full-Time Social Worker allocation on care transition team focused on DSRIP
- ✓ Physicians incentives, such as PMPM to support care transition work.

3.b.i ,Cardiovascular Disease Management, benefits from the allocations and plans listed above

PCMH expansion:

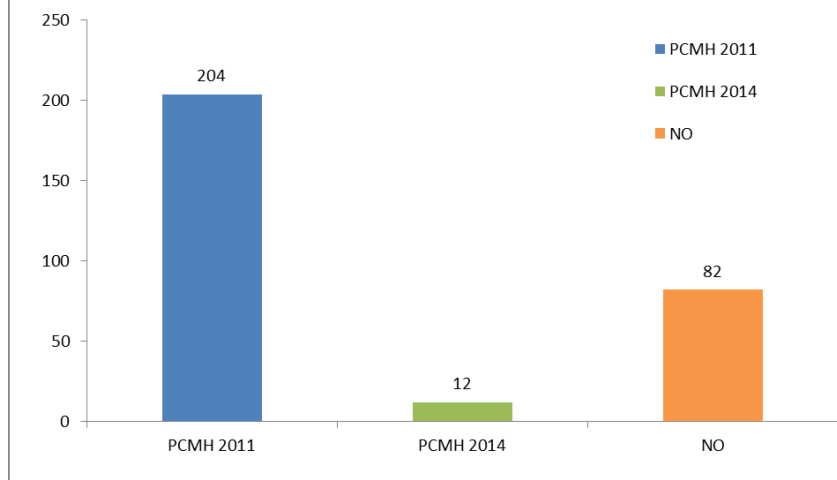
Support for multiple projects

- ✓ Patient Centered Medical Home part of many projects in DSRIP
- ✓ Generally, current network's 2017 goal is for PCPs moving to 2014 standards.
- ✓ DSRIP funds to help address challenges bringing providers aboard that are new to network (i.e. Chautauqua, Niagara County)



COMMUNITY PARTNERS OF WNY
Performing Provider System

Status PCMH Across Erie, Niagara, and Chautauqua



Data current as of 10/30/15

Highlights:

Additional CPWNY Primary Care & Clinical Improvement Initiatives

- 3.a.i. Integration of Behavioral Health and Primary Care (PCMH level 3)
 - ✓ Spectrum Health (lead)
 - ✓ Heavily collaborative with Millennium

- 3.g.i Integration of Palliative Care into primary care practices
 - ✓ Hospice Buffalo (lead)
 - ✓ Supporting Palliative Care Consults in primary care/PCMH



COMMUNITY PARTNERS OF WNY
Performing Provider System

Additional Highlights:

Maternal Child Health & Telemedicine

- 2.c.ii Expand usage of telemedicine in underserved areas to provide access to otherwise scarce services
 - ✓ Piloted at WCA Hospital, Jamestown, NY
 - ✓ Credentialing in progress
 - ✓ Consults begin for targeted patient groups this month

- 3.f.i Increase support programs for maternal and child health through the Nurse Family Partnership Model
 - ✓ First time moms
 - ✓ Engagements for 18month
 - ✓ Partner is Chautauqua County Department of Health
 - ✓ Project Lead, Julie Lulek



COMMUNITY PARTNERS OF WNY
Performing Provider System

NYS Prevention Agenda: Domain 4

4.a.i. Mental Emotional and Behavioral Health-Well in Communities (MEB)

- ✓ Led by ECCPASA/Mental Health Association
- ✓ Heavily collaborative with Millennium

4.b.i Promote tobacco use cessation, among low SES or those with poor mental health

- ✓ Led by Roswell Park



COMMUNITY PARTNERS OF WNY
Performing Provider System

4.a.i. Mental, Emotional & Behavioral Health Promotion

- Project informed by WNY community needs assessment & NYS prevention agenda focus area
- Selected programs off the SAMHSA registry to address community gaps
 - depression
 - suicide prevention
 - prescription/illicit drug use & abuse.
- Community wide PR campaign
 - reduce stigma
 - promote good mental health

4.b.i. Tobacco Cessation:

Low SES and Poor Mental Health Target

- Roswell Park Cancer Institute
- Project aligned with Prevention Agenda Goal #2.2
- Increase provider use for the “opt to quit” :
 1. Provider signs patient up.
 2. Quit line contacts patient.
 3. Follow-up with provider.
- Provider awareness and “click a button” to activate.
- Target FQHCs/Multi-Unit Housing

Project overlaps with CVD management strategies (3.b.i)

Highlighted Work-Streams:

Workforce Updates

- ✓ Baseline survey collection in progress
- ✓ Timed to align with our fellow PPS Millennium Care Collaboration to administer same survey to avoid duplication of effort
- ✓ Rural-AHEC collecting and maintaining all information
- ✓ Planned continued collaboration with MCC on next steps



COMMUNITY PARTNERS OF WNY
Performing Provider System

Highlighted Work Streams:

Cultural Competency/Health Literacy

- ✓ CBOs engaged in an ad hoc cultural competency team meeting quarterly. Goals include discussion on:
 - strategies
 - health disparities
 - surveys (i.e. health plan, education, parish nursing, health home, high volume Medicaid practices)



COMMUNITY PARTNERS OF WNY
Performing Provider System

Closing

- Received feedback this week from independent assessor regarding Q2 report
- Full documentation for Q2 submission will be available after Jan 1, 2016
- Q1 report is available on-line now at Department of Health Website



Questions



COMMUNITY PARTNERS OF WNY
Performing Provider System